

Courtesy Of Gurkirat S Sran Of MaxWell Polaris

\$659,900 - 829 Morris Avenue, Leduc

MLS® #E4464409

\$659,900

4 Bedroom, 4.00 Bathroom, 2,443 sqft
Single Family on 0.00 Acres

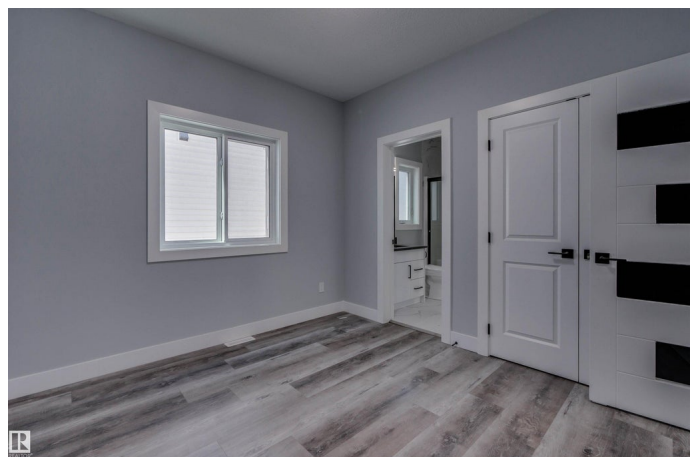
Meadowview Park_LEDU, Leduc, AB

Brand New Single Family House over 2400sqft. Its has total 4 Bedrooms, and 4 Full washrooms, With Side Door Entrance plus a Side Concrete path to Basement, Fully Landscaped, Fully Fenced, Deck completed. This Open concept 18' feet high ceiling ,with new Modern features/Upgrades, DEN on MAIN FLOOR with attached full washroom, large pantry, with 3 bedrooms on the second level, with a large size bonus room, and 3 full washrooms on the second floor, has a side entry door. Near by is Elementary schools, park, playground, open area at the back of the house. Extra features were extra windows added in the basement, HRV upgraded system, full top up tiles in the washrooms, Delta hoes and door nobbs etc... So many upgrades to see come check out this house.

Built in 2023

Essential Information

MLS® #	E4464409
Price	\$659,900
Bedrooms	4
Bathrooms	4.00
Full Baths	4
Square Footage	2,443
Acres	0.00
Year Built	2023



Type	Single Family
Sub-Type	Detached Single Family
Style	2 Storey
Status	Active

Community Information

Address	829 Morris Avenue
Area	Leduc
Subdivision	Meadowview Park_LEDU
City	Leduc
County	ALBERTA
Province	AB
Postal Code	T9E 1G1

Amenities

Amenities	Carbon Monoxide Detectors, Ceiling 9 ft., Closet Organizers, Deck, Television Connection, Walk-up Basement, HRV System, 9 ft. Basement Ceiling
Parking	Double Garage Attached

Interior

Interior Features	ensuite bathroom
Appliances	Dishwasher-Built-In, Dryer, Garage Control, Garage Opener, Hood Fan, Refrigerator, Stove-Electric, Washer, Window Coverings, TV Wall Mount, Curtains and Blinds
Heating	Forced Air-1, Natural Gas
Stories	2
Has Basement	Yes
Basement	Full, Unfinished

Exterior

Exterior	Concrete, Asphalt, Brick, Vinyl
Exterior Features	Airport Nearby, Fenced, Fruit Trees/Shrubs, Golf Nearby, Landscaped, Playground Nearby, Public Swimming Pool, Public Transportation, Recreation Use, Schools, Shopping Nearby
Roof	Asphalt Shingles
Construction	Concrete, Asphalt, Brick, Vinyl
Foundation	Concrete Perimeter

Additional Information

Date Listed November 1st, 2025

Days on Market 4

Zoning Zone 81

DATA IS DEEMED RELIABLE BUT IS NOT GUARANTEED ACCURATE BY THE REALTORS® ASSOCIATION OF EDMONTON. COPYRIGHT 2025 BY THE REALTORS® ASSOCIATION OF EDMONTON. ALL RIGHTS RESERVED. Trademarks are owned or controlled by the Canadian Real Estate Association (CREA) and identify real estate professionals who are members of CREA (REALTOR®, REALTORS®) and/or the quality of services they provide (MLS®, Multiple Listing Service®)

Listing information last updated on November 5th, 2025 at 3:32pm MST