

# \$319,000 - 68 655 Watt Boulevard, Edmonton

MLS® #E4461899

**\$319,000**

3 Bedroom, 2.50 Bathroom, 1,338 sqft  
Condo / Townhouse on 0.00 Acres

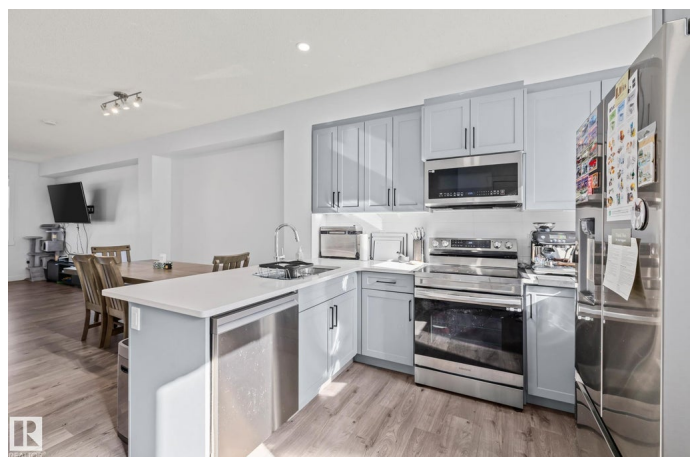
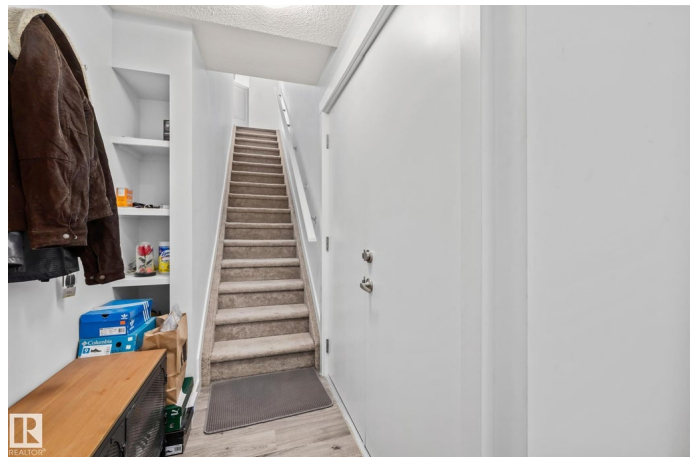
Walker, Edmonton, AB

Modern comfort meets unbeatable value in this 1,339 sq.ft. 3-storey townhome in Walker Lakes. Featuring 9' ceilings, quartz countertops, stainless steel appliances, and an open-concept main floor that connects the kitchen, dining, and living spaces, this home blends function and style perfectly. Upstairs offers 3 bedrooms including a primary suite with walk-in closet and ensuite, plus convenient in-suite laundry. The tandem double garage comfortably fits two vehicles with room for storage, and a private balcony offers outdoor space without the upkeep. Built in 2021 and well cared for by its original owner, this home sits in a family-friendly, walkable community close to parks, schools, shopping, and transit. Condo fees include exterior maintenance, snow removal, insurance, and more.

Built in 2020

## Essential Information

MLS® #	E4461899
Price	\$319,000
Bedrooms	3
Bathrooms	2.50
Full Baths	2
Half Baths	1
Square Footage	1,338



Acres	0.00
Year Built	2020
Type	Condo / Townhouse
Sub-Type	Townhouse
Style	3 Storey
Status	Active

### **Community Information**

Address	68 655 Watt Boulevard
Area	Edmonton
Subdivision	Walker
City	Edmonton
County	ALBERTA
Province	AB
Postal Code	T6X 0Y2

### **Amenities**

Amenities	Ceiling 9 ft., Club House, Deck, No Smoking Home, Parking-Visitor, Party Room
Parking	Double Garage Attached, Tandem

### **Interior**

Interior Features	ensuite bathroom
Appliances	Dishwasher-Built-In, Dryer, Garage Opener, Microwave Hood Fan, Refrigerator, Stove-Electric, Washer, Window Coverings
Heating	Forced Air-1, Natural Gas
Stories	3
Has Basement	Yes
Basement	None, No Basement

### **Exterior**

Exterior	Wood, Vinyl
Exterior Features	Backs Onto Park/Trees, Landscaped, Low Maintenance Landscape, Picnic Area, Playground Nearby, Public Transportation, Schools, Shopping Nearby
Roof	Asphalt Shingles
Construction	Wood, Vinyl
Foundation	Concrete Perimeter

### **School Information**

Elementary	Ellerslie Primary
Middle	Corpus Christi Catholic
High	J Percy Page

### **Additional Information**

Date Listed	October 12th, 2025
Days on Market	8
Zoning	Zone 53
Condo Fee	\$290

DATA IS DEEMED RELIABLE BUT IS NOT GUARANTEED ACCURATE BY THE REALTORS® ASSOCIATION OF EDMONTON. COPYRIGHT 2025 BY THE REALTORS® ASSOCIATION OF EDMONTON. ALL RIGHTS RESERVED. Trademarks are owned or controlled by the Canadian Real Estate Association (CREA) and identify real estate professionals who are members of CREA (REALTOR®, REALTORS®) and/or the quality of services they provide (MLS®, Multiple Listing Service®)

Listing information last updated on October 20th, 2025 at 7:32pm MDT