

\$494,600 - 6708 132 Avenue, Edmonton

MLS® #E4460921

\$494,600

6 Bedroom, 2.00 Bathroom, 1,078 sqft
Single Family on 0.00 Acres

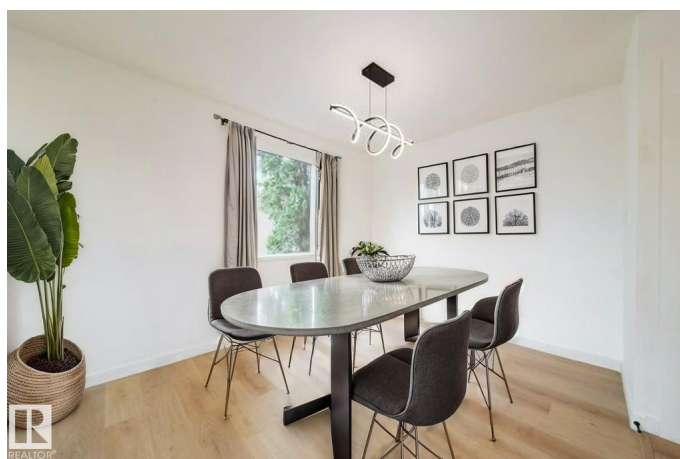
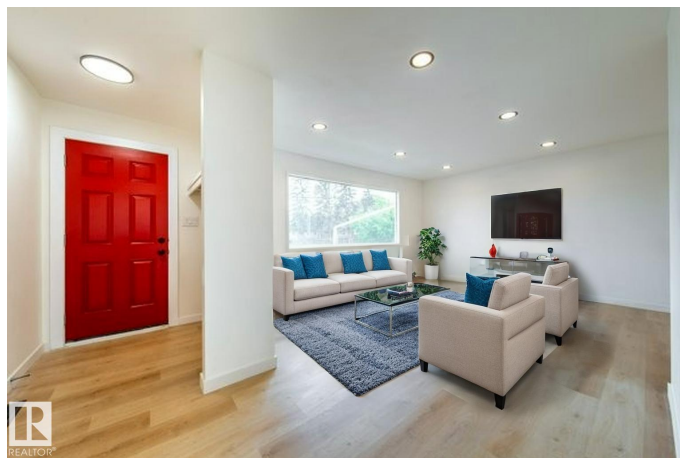
Delwood, Edmonton, AB

Welcome to 6708 132 Avenue NWâ€”an exceptional, move-in-ready Bungalow featuring a legal basement suite! This spacious home has been beautifully updated throughout, offering outstanding flexibility for families or investors. Upstairs youâ€™ll find 3 bedrooms, 1 full bath, fresh paint, brand new flooring, and a stunning new kitchen with modern appliances. The legal basement suite offers 3 bedrooms, 1 full bath, its own entrance, a completely new kitchen, new flooring, and new furnace, ideal as a mortgage helper or for multi-generational living. Each unit has its own separate laundry. Additional features include a detached double garage and a large yard perfect for entertaining or relaxing. Located close to schools, parks, shopping, and transit, this home delivers comfort, convenience, and excellent value. Donâ€™t miss your chance to own this beautifully upgraded property with a legal income suite in a fantastic location! Photos are virtually staged.

Built in 1963

Essential Information

MLS® #	E4460921
Price	\$494,600
Bedrooms	6



Bathrooms	2.00
Full Baths	2
Square Footage	1,078
Acres	0.00
Year Built	1963
Type	Single Family
Sub-Type	Detached Single Family
Style	Bungalow
Status	Active

Community Information

Address	6708 132 Avenue
Area	Edmonton
Subdivision	Delwood
City	Edmonton
County	ALBERTA
Province	AB
Postal Code	T5C 2A5

Amenities

Amenities	Fire Pit, No Animal Home, No Smoking Home
Parking Spaces	4
Parking	Double Garage Detached

Interior

Appliances	Hood Fan, Dryer-Two, Refrigerators-Two, Stoves-Two, Washers-Two, Dishwasher-Two
Heating	Forced Air-2, Natural Gas
Stories	2
Has Suite	Yes
Has Basement	Yes
Basement	Full, Finished

Exterior

Exterior	Wood, Stucco
Exterior Features	Back Lane, Fenced, Flat Site, Fruit Trees/Shrubs, Landscaped, Level Land, Public Transportation, Schools, Shopping Nearby
Roof	Asphalt Shingles
Construction	Wood, Stucco

Foundation Slab

Additional Information

Date Listed October 3rd, 2025

Days on Market 2

Zoning Zone 02

DATA IS DEEMED RELIABLE BUT IS NOT GUARANTEED ACCURATE BY THE REALTORS® ASSOCIATION OF EDMONTON. COPYRIGHT 2025 BY THE REALTORS® ASSOCIATION OF EDMONTON. ALL RIGHTS RESERVED.Trademarks are owned or controlled by the Canadian Real Estate Association (CREA) and identify real estate professionals who are members of CREA (REALTOR®, REALTORS®) and/or the quality of services they provide (MLS®, Multiple Listing Service®)

Listing information last updated on October 5th, 2025 at 12:17am MDT