

# **\$1,150,000 - 690 Henderson Street, Edmonton**

MLS® #E4460506

**\$1,150,000**

7 Bedroom, 5.50 Bathroom, 3,490 sqft

Single Family on 0.00 Acres

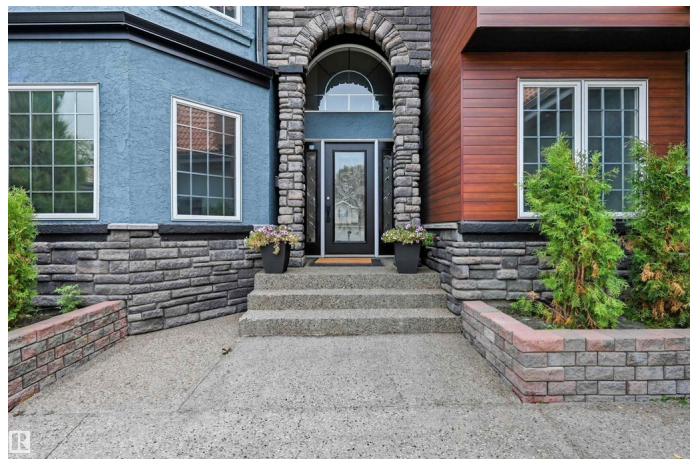
Henderson Estates, Edmonton, AB

Nearly 5000sf of total living space in prestigious Henderson Estates on a 9052sf pie lot. Featuring a unique & versatile layout, this home is nestled in a family-friendly neighbourhood within close proximity to all amenities. Designed to accommodate a variety of lifestyles, it's ideal for growing families, multi-generational living, blended households, or those seeking a dedicated home office space. Great curb appeal, oversized triple garage, clay tile roof, upgraded exterior, newly added separate entrance, & new deck. 3 living areas, 2 full kitchens, multiple dining areas, 7 bedrooms, 6 bathrooms & ample storage. Main floor showcases a spacious great room, inviting family room, formal dining, bright kitchen w/dining nook & direct access to yard/deck. Convenient main floor bedroom complete w/3pc ensuite, complemented by a 2pc bathroom. 4 bedrooms on upper level including 2 primary suites. Lower level offers large rec area, 2nd kitchen, 2 bedrooms & 3pc bathrm. Plenty of indoor/outdoor entertaining spaces.

Built in 1999

## **Essential Information**

MLS® #	E4460506
Price	\$1,150,000



Bedrooms	7
Bathrooms	5.50
Full Baths	5
Half Baths	1
Square Footage	3,490
Acres	0.00
Year Built	1999
Type	Single Family
Sub-Type	Detached Single Family
Style	2 Storey
Status	Active

### Community Information

Address	690 Henderson Street
Area	Edmonton
Subdivision	Henderson Estates
City	Edmonton
County	ALBERTA
Province	AB
Postal Code	T6R 2R8

### Amenities

Amenities	Deck, Detectors Smoke, Guest Suite, Vaulted Ceiling
Parking Spaces	6
Parking	Triple Garage Attached

### Interior

Interior Features	ensuite bathroom
Appliances	Air Conditioning-Central, Garage Control, Garage Opener, Hood Fan, Oven-Microwave, Stove-Electric, Stove-Gas, Washer, Window Coverings, See Remarks, Refrigerators-Two, Dishwasher-Two
Heating	Forced Air-2, Natural Gas
Fireplace	Yes
Fireplaces	See Remarks
Stories	3
Has Basement	Yes
Basement	Full, Finished

### Exterior

Exterior	Wood, Stone, Stucco
Exterior Features	Fenced, Landscaped, Public Swimming Pool, Public Transportation, Schools, Shopping Nearby, See Remarks
Roof	Clay Tile
Construction	Wood, Stone, Stucco
Foundation	Concrete Perimeter

### **School Information**

Elementary	EarlBuxton/StMary
Middle	Riverbend/A.JosephMacneil
High	LillianOsborne/MMM

### **Additional Information**

Date Listed	October 2nd, 2025
Days on Market	1
Zoning	Zone 14

DATA IS DEEMED RELIABLE BUT IS NOT GUARANTEED ACCURATE BY THE REALTORS® ASSOCIATION OF EDMONTON. COPYRIGHT 2025 BY THE REALTORS® ASSOCIATION OF EDMONTON. ALL RIGHTS RESERVED.Trademarks are owned or controlled by the Canadian Real Estate Association (CREA) and identify real estate professionals who are members of CREA (REALTOR®, REALTORS®) and/or the quality of services they provide (MLS®, Multiple Listing Service®)

Listing information last updated on October 2nd, 2025 at 9:32pm MDT