

## \$239,000 - 106 111 Watt Common Sw, Edmonton

MLS® #E4460050

**\$239,000**

3 Bedroom, 2.00 Bathroom, 844 sqft

Condo / Townhouse on 0.00 Acres

Walker, Edmonton, AB

Ground floor very Spacious 3-bedroom, 2-bathroom apartment, Laundry In-suite located just steps from Walmart and major amenities. Currently rented for \$2,100/month, this well-kept unit offers a functional layout and strong rental income, making it an excellent opportunity for investors or end-users in a prime location. It also have Wheel-chair excess.

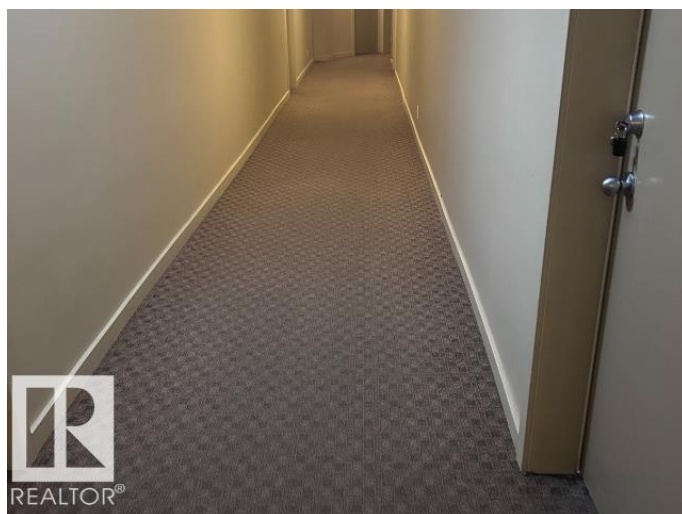
Built in 2014

### Essential Information

MLS® #	E4460050
Price	\$239,000
Bedrooms	3
Bathrooms	2.00
Full Baths	2
Square Footage	844
Acres	0.00
Year Built	2014
Type	Condo / Townhouse
Sub-Type	Lowrise Apartment
Style	Single Level Apartment
Status	Active

### Community Information

Address	106 111 Watt Common Sw
Area	Edmonton



Subdivision	Walker
City	Edmonton
County	ALBERTA
Province	AB
Postal Code	T6X 2C6

### Amenities

Amenities	Intercom, Security Door
Parking Spaces	1
Parking	Underground

### Interior

Interior Features	ensuite bathroom
Appliances	Dishwasher-Built-In, Dryer, Microwave Hood Fan, Refrigerator, Stove-Electric, Washer
Heating	Baseboard, Hot Water, Natural Gas
# of Stories	4
Stories	1
Has Basement	Yes
Basement	None, No Basement

### Exterior

Exterior	Wood, Fiber Cement
Exterior Features	Playground Nearby, Public Transportation, Schools, Shopping Nearby
Roof	Asphalt Shingles
Construction	Wood, Fiber Cement
Foundation	Concrete Perimeter

### Additional Information

Date Listed	September 29th, 2025
Days on Market	1
Zoning	Zone 53
Condo Fee	\$470

DATA IS DEEMED RELIABLE BUT IS NOT GUARANTEED ACCURATE BY THE REALTORS® ASSOCIATION OF EDMONTON. COPYRIGHT 2025 BY THE REALTORS® ASSOCIATION OF EDMONTON. ALL RIGHTS RESERVED. Trademarks are owned or controlled by the Canadian Real Estate Association (CREA) and identify real estate professionals who are members of CREA (REALTOR®, REALTORS®) and/or the quality of services they provide (MLS®, Multiple Listing Service®)

Listing information last updated on September 30th, 2025 at 5:02pm MDT