

\$235,000 - 404 8728 Gateway Boulevard, Edmonton

MLS® #E4460020

\$235,000

2 Bedroom, 2.00 Bathroom, 1,314 sqft

Condo / Townhouse on 0.00 Acres

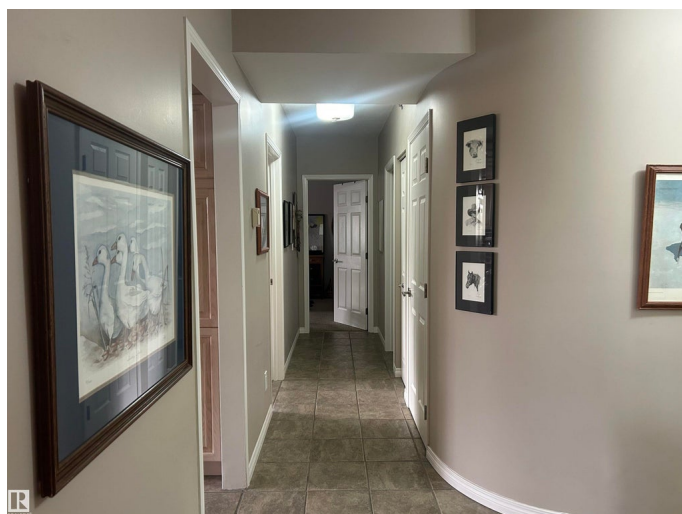
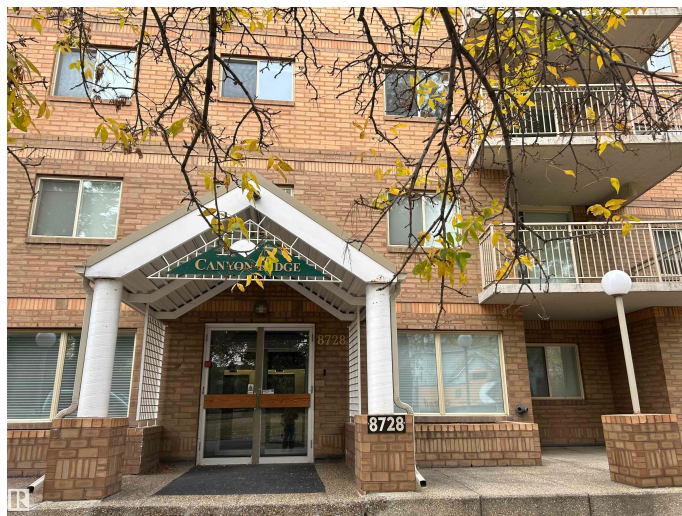
Strathcona, Edmonton, AB

PRIME LOCATION! Nestled at the top of our beautiful (world renown) river valley with easy access to all the hot spots, river spots, quiet spots. This amazing spacious 1300+ square foot condo with views to pine for, is a must see. Brand new appliances a couple of years ago including front load Bosch washer dryer. Great kitchen with tons of cupboards and pantry, large dining and living room and a gas fireplace to cozy up to....winter is coming!!! Prime bedroom has ensuite and W/I closet. This is a concrete building so very quiet and it has heat pump heating system..no pesky water heater pipes. Large deck facing the river and gas BBQ hook up. You pay only power and internet. Nicely appointed gym and social room and heated underground parking with a storage cage. Visitor Parking.

Built in 1992

Essential Information

MLS® #	E4460020
Price	\$235,000
Bedrooms	2
Bathrooms	2.00
Full Baths	2
Square Footage	1,314
Acres	0.00
Year Built	1992



Type	Condo / Townhouse
Sub-Type	Lowrise Apartment
Style	Single Level Apartment
Status	Active

Community Information

Address	404 8728 Gateway Boulevard
Area	Edmonton
Subdivision	Strathcona
City	Edmonton
County	ALBERTA
Province	AB
Postal Code	T6E 6K3

Amenities

Amenities	Air Conditioner, Exercise Room, Parking-Visitor, Party Room, Natural Gas BBQ Hookup
Parking Spaces	1
Parking	Heated, Parkade

Interior

Interior Features	ensuite bathroom
Appliances	Dishwasher-Built-In, Dryer, Hood Fan, Refrigerator, Stove-Electric, Washer
Heating	Heat Pump, Natural Gas
Fireplace	Yes
Fireplaces	Corner
# of Stories	6
Stories	1
Has Basement	Yes
Basement	None, No Basement

Exterior

Exterior	Concrete, Brick
Exterior Features	Backs Onto Park/Trees, Golf Nearby, Playground Nearby, Public Transportation, Ravine View, River Valley View, Schools, Shopping Nearby, View Downtown
Roof	Tar & Gravel
Construction	Concrete, Brick

Foundation Concrete Perimeter

Additional Information

Date Listed September 29th, 2025
Days on Market 1
Zoning Zone 15
Condo Fee \$1,094

DATA IS DEEMED RELIABLE BUT IS NOT GUARANTEED ACCURATE BY THE REALTORS® ASSOCIATION OF EDMONTON. COPYRIGHT 2025 BY THE REALTORS® ASSOCIATION OF EDMONTON. ALL RIGHTS RESERVED.Trademarks are owned or controlled by the Canadian Real Estate Association (CREA) and identify real estate professionals who are members of CREA (REALTOR®, REALTORS®) and/or the quality of services they provide (MLS®, Multiple Listing Service®)

Listing information last updated on September 30th, 2025 at 4:47pm MDT