

\$365,000 - 9520 178a Avenue, Edmonton

MLS® #E4459701

\$365,000

4 Bedroom, 2.00 Bathroom, 1,025 sqft

Single Family on 0.00 Acres

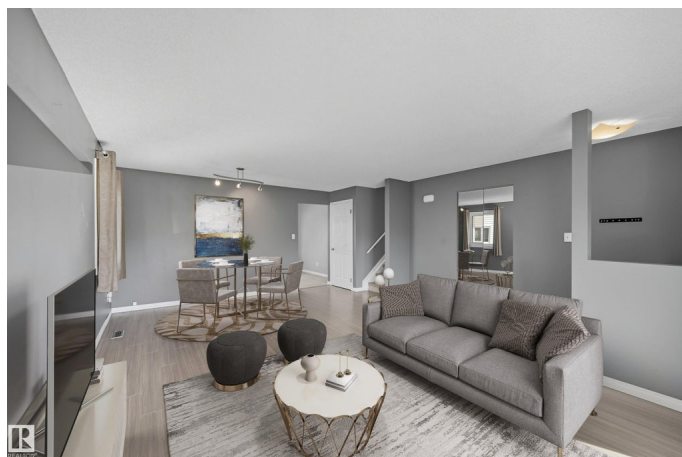
Lago Lindo, Edmonton, AB

Welcome to this lovely home offering over 1600 sqft of living space, situated on a HUGE lot and only steps to multiple schools. This home offers great living space for the entire family including an expansive Living/Dining Rm, 4 generous sized Bedrooms, a huge Recreation Rm, a sound insulated rm (music/bedroom), a Den, 2 full Bathrooms and so much more. You will appreciate the large windows, newer flooring, palatal wall colors, solid wood Kitchen cabinets, and great storage space throughout. The yard is fenced down the middle - perfect for young children and pets, includes raised garden beds, a flourishing Apple tree, a concrete patio ready for a fire pit, a storage shed and even RV Parking. Property is move in ready.

Built in 1983

Essential Information

MLS® #	E4459701
Price	\$365,000
Lease Rate	\$10
Bedrooms	4
Bathrooms	2.00
Full Baths	2
Square Footage	1,025
Acres	0.00



Year Built	1983
Type	Single Family
Sub-Type	Detached Single Family
Style	4 Level Split
Status	Active

Community Information

Address	9520 178a Avenue
Area	Edmonton
Subdivision	Lago Lindo
City	Edmonton
County	ALBERTA
Province	AB
Postal Code	T5Z 2G6

Amenities

Amenities	Deck, Dog Run-Fenced In
Parking	Front Drive Access, RV Parking, See Remarks

Interior

Appliances	Dishwasher-Built-In, Dryer, Refrigerator, Storage Shed, Stove-Electric, Washer, Curtains and Blinds
Heating	Forced Air-1, Natural Gas
Stories	4
Has Basement	Yes
Basement	Full, Finished

Exterior

Exterior	Wood, Stucco, Vinyl
Exterior Features	Cul-De-Sac, Flat Site, Landscaped
Roof	Asphalt Shingles
Construction	Wood, Stucco, Vinyl
Foundation	Concrete Perimeter

School Information

Elementary	St. Charles, Bishop Gresch
Middle	Mary Butterworth, Fl. Hall
High	O'Leary, M.E LaZerte

Additional Information

Date Listed September 26th, 2025

Days on Market 5

Zoning Zone 28

DATA IS DEEMED RELIABLE BUT IS NOT GUARANTEED ACCURATE BY THE REALTORS® ASSOCIATION OF EDMONTON. COPYRIGHT 2025 BY THE REALTORS® ASSOCIATION OF EDMONTON. ALL RIGHTS RESERVED. Trademarks are owned or controlled by the Canadian Real Estate Association (CREA) and identify real estate professionals who are members of CREA (REALTOR®, REALTORS®) and/or the quality of services they provide (MLS®, Multiple Listing Service®)

Listing information last updated on October 1st, 2025 at 1:17am MDT