

\$499,900 - 3315 & 3317 105 Avenue, Edmonton

MLS® #E4456603

\$499,900

6 Bedroom, 2.00 Bathroom, 2,110 sqft
Single Family on 0.00 Acres

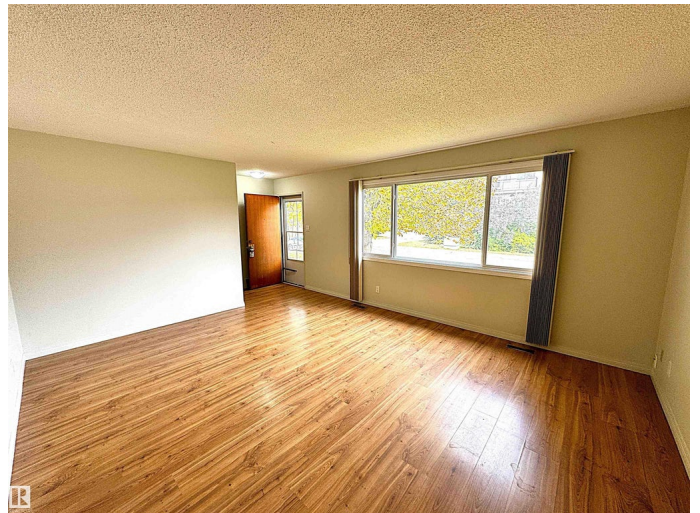
Rundle Heights, Edmonton, AB

Both halves of a side by side bungalow duplex, 2,100 total sq/ft, on a 62'x120' lot located on a quiet street just a few blocks from Rundle Park and the River Valley! This property has two units that are mirror images of each other. Both feature 3 bedrooms and a 4 piece bath, kitchen, living room, and unfinished basements. Upgrades include vinyl windows on the main floor, mid-efficiency furnaces, replaced hot water tanks, and shingles that were done approximately 5 years ago. Terrific location with south facing back yards and two side entrances that can access their respective basements, this property has so much potential and is definitely a must see!

Built in 1968

Essential Information

MLS® #	E4456603
Price	\$499,900
Bedrooms	6
Bathrooms	2.00
Full Baths	2
Square Footage	2,110
Acres	0.00
Year Built	1968
Type	Single Family
Sub-Type	Duplex Side By Side



Style Bungalow
Status Active

Community Information

Address 3315 & 3317 105 Avenue
Area Edmonton
Subdivision Rundle Heights
City Edmonton
County ALBERTA
Province AB
Postal Code T5W 0B5

Amenities

Amenities Off Street Parking, Storage-In-Suite, Vinyl Windows, See Remarks
Parking 2 Outdoor Stalls, Rear Drive Access, See Remarks

Interior

Appliances Dishwasher-Built-In, Dryer-Two, Refrigerators-Two, Stoves-Two,
Washers-Two
Heating Forced Air-2, Natural Gas
Stories 1
Has Basement Yes
Basement Full, Unfinished

Exterior

Exterior Wood, Stucco
Exterior Features Fenced, Landscaped, See Remarks
Roof Asphalt Shingles
Construction Wood, Stucco
Foundation Concrete Perimeter

School Information

Elementary Ivor Dent School
Middle Ivor Dent School
High Eastglen School

Additional Information

Date Listed September 6th, 2025
Days on Market 7
Zoning Zone 23

DATA IS DEEMED RELIABLE BUT IS NOT GUARANTEED ACCURATE BY THE REALTORS® ASSOCIATION OF EDMONTON. COPYRIGHT 2025 BY THE REALTORS® ASSOCIATION OF EDMONTON. ALL RIGHTS RESERVED. Trademarks are owned or controlled by the Canadian Real Estate Association (CREA) and identify real estate professionals who are members of CREA (REALTOR®, REALTORS®) and/or the quality of services they provide (MLS®, Multiple Listing Service®)

Listing information last updated on September 13th, 2025 at 3:47pm MDT