

# \$179,900 - 6 The Parkway, Edmonton

MLS® #E4453251

**\$179,900**

3 Bedroom, 2.00 Bathroom, 1,576 sqft

Land Lease Community on 0.00 Acres

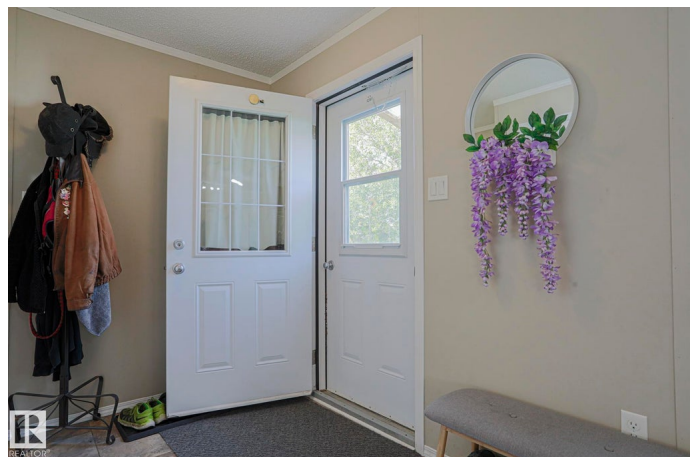
Maple Ridge (Edmonton), Edmonton, AB

Ready to stop renting and finally own your own place? This 1,575 sq. ft. 2018-built gem delivers all the space, style, and comfort youâ€™ve been searching for! The bright Great Room with soaring vaulted ceilings is perfect for gatherings, while the modern kitchen steals the show with rich cabinetry, a huge island with seating, corner pantry, and upgraded appliances. Your primary suite is a true retreat with a walk-in closet and spa-like 4-piece ensuite featuring a relaxing jacuzzi tub. Two more bedrooms, another full bath, and a bonus front roomâ€™’ideal for a home office or kidsâ€™’zoneâ€™’are tucked on the opposite side for privacy. Laundry is conveniently located just steps from the primary. Outside, enjoy a quiet fenced lotâ€™’perfect for BBQs, gardening, or simply soaking up the sun. This is the kind of home you donâ€™t want to miss!

Built in 2018

## Essential Information

MLS® #	E4453251
Price	\$179,900
Bedrooms	3
Bathrooms	2.00
Full Baths	2
Square Footage	1,576



Acres	0.00
Year Built	2018
Type	Land Lease Community
Sub-Type	Detached Single Family
Style	Bungalow
Status	Active

### Community Information

Address	6 The Parkway
Area	Edmonton
Subdivision	Maple Ridge (Edmonton)
City	Edmonton
County	ALBERTA
Province	AB
Postal Code	T6P 1C7

### Amenities

Parking Spaces	2
Parking	2 Outdoor Stalls

### Interior

Interior Features	ensuite bathroom
Appliances	Air Conditioning-Central, Dishwasher-Built-In, Dryer, Microwave Hood Fan, Refrigerator, Storage Shed, Stove-Electric, Washer, Window Coverings
Heating	Forced Air-1, Natural Gas

### Exterior

Exterior	Wood
Construction	Wood
Foundation	Wood

### Additional Information

Date Listed	August 15th, 2025
Days on Market	1
Zoning	Zone 42

DATA IS DEEMED RELIABLE BUT IS NOT GUARANTEED ACCURATE BY THE REALTORS® ASSOCIATION OF EDMONTON. COPYRIGHT 2025 BY THE REALTORS® ASSOCIATION OF EDMONTON. ALL RIGHTS RESERVED. Trademarks are owned or controlled by the Canadian Real Estate Association (CREA) and identify real estate professionals who are members of CREA (REALTOR®, REALTORS®) and/or the quality of services they

provide (MLS®®, Multiple Listing Service®®)  
Listing information last updated on August 16th, 2025 at 5:47pm MDT