

\$100,000 - 106 14908 26 Street, Edmonton

MLS® #E4451282

\$100,000

2 Bedroom, 1.00 Bathroom, 885 sqft

Condo / Townhouse on 0.00 Acres

Fraser, Edmonton, AB

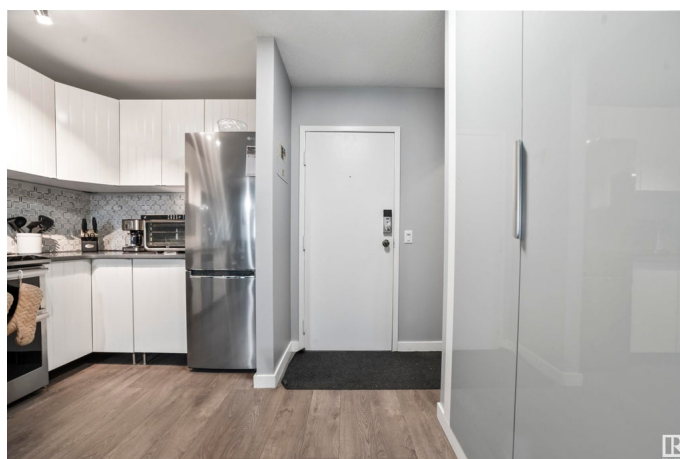
Beautifully upgraded condo featuring a stunning kitchen with crisp white cabinetry, stainless steel appliances, and plenty of counter space. Enjoy a separate dining area highlighted by a gorgeous feature wall and a bright, welcoming living room for relaxing. This home offers 2 spacious bedrooms and 1 bathroom. Includes 1 parking stall for your convenience. A perfect blend of style, comfort, and functionality—move-in ready and waiting for you!

Built in 1981

Essential Information

MLS® #	E4451282
Price	\$100,000
Bedrooms	2
Bathrooms	1.00
Full Baths	1
Square Footage	885
Acres	0.00
Year Built	1981
Type	Condo / Townhouse
Sub-Type	Lowrise Apartment
Style	Single Level Apartment
Status	Active

Community Information



Address	106 14908 26 Street
Area	Edmonton
Subdivision	Fraser
City	Edmonton
County	ALBERTA
Province	AB
Postal Code	T5Y 2G4

Amenities

Amenities	See Remarks
Parking	Stall

Interior

Appliances	Dishwasher-Built-In, Refrigerator, Stove-Electric
Heating	Baseboard, Natural Gas
# of Stories	4
Stories	1
Has Basement	Yes
Basement	None, No Basement

Exterior

Exterior	Wood, Stucco
Exterior Features	Golf Nearby, Playground Nearby, Public Swimming Pool, Public Transportation, Schools
Roof	Asphalt Shingles
Construction	Wood, Stucco
Foundation	Concrete Perimeter

School Information

Elementary	Fraser School
Middle	John D. Bracco
High	Eastglen School

Additional Information

Date Listed	August 5th, 2025
Days on Market	2
Zoning	Zone 35
Condo Fee	\$567

DATA IS DEEMED RELIABLE BUT IS NOT GUARANTEED ACCURATE BY THE REALTORS® ASSOCIATION OF

EDMONTON. COPYRIGHT 2025 BY THE REALTORS® ASSOCIATION OF EDMONTON. ALL RIGHTS RESERVED.Trademarks are owned or controlled by the Canadian Real Estate Association (CREA) and identify real estate professionals who are members of CREA (REALTOR®, REALTORS®) and/or the quality of services they provide (MLS®, Multiple Listing Service®)

Listing information last updated on August 7th, 2025 at 11:48am MDT