

## \$229,900 - 202 5521 7 Avenue, Edmonton

MLS® #E4450482

**\$229,900**

2 Bedroom, 2.00 Bathroom, 818 sqft

Condo / Townhouse on 0.00 Acres

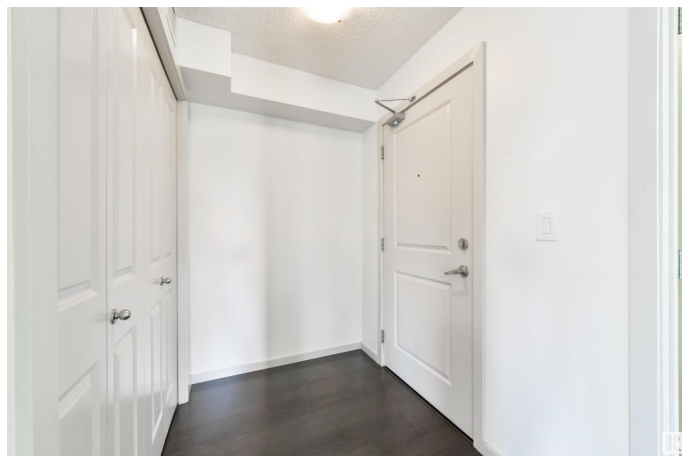
Charlesworth, Edmonton, AB

Nearly 818 sq.ft. condo for sale in CHARLESWORTH. This SECOND FLOOR CORNER UNIT features 2 BEDS + 2 BATHS, IN-SUITE LAUNDRY, a large WRAP-AROUND BALCONY w/ a POND VIEW, & a TITLED UNDERGROUND PARKING STALL. Inside boasts an OPEN FLOOR PLAN that includes a galley kitchen w/ STAINLESS STEEL APPLIANCES + BREAKFAST NOOK, a flexible dining & living space w/ both SOUTH & WEST facing windows that let in PLENTY of NATURAL LIGHT, a PRIMARY BEDROOM w/ WALK-IN CLOSET + 4pc ENSUITE, a spacious SPARE BEDROOM, a SECOND 4pc BATH, & again, IN-SUITE LAUNDRY w/ extra storage space. Located steps away from every amenity you can think of including SHOPS, CAFES, GROCERY STORES, BANKS, RESTAURANTS, PARKS, TRAILS and more! Quick/easy access to the Anthony Henday & Highway 2!

Built in 2014

### Essential Information

MLS® #	E4450482
Price	\$229,900
Bedrooms	2
Bathrooms	2.00



Full Baths	2
Square Footage	818
Acres	0.00
Year Built	2014
Type	Condo / Townhouse
Sub-Type	Lowrise Apartment
Style	Single Level Apartment
Status	Active

### Community Information

Address	202 5521 7 Avenue
Area	Edmonton
Subdivision	Charlesworth
City	Edmonton
County	ALBERTA
Province	AB
Postal Code	T6X 2A8

### Amenities

Amenities	On Street Parking, Detectors Smoke, Intercom, No Smoking Home, Parking-Extra, Parking-Visitor, Secured Parking, Storage-In-Suite
Parking	Heated, Stall, Underground

### Interior

Interior Features	ensuite bathroom
Appliances	Dishwasher-Built-In, Microwave Hood Fan, Refrigerator, Stacked Washer/Dryer, Stove-Electric
Heating	Baseboard, Water
# of Stories	4
Stories	1
Has Basement	Yes
Basement	None, No Basement

### Exterior

Exterior	Wood, Vinyl
Exterior Features	Airport Nearby, Golf Nearby, Landscaped, No Back Lane, Playground Nearby, Schools, Shopping Nearby, See Remarks
Roof	Asphalt Shingles
Construction	Wood, Vinyl

Foundation                      Concrete Perimeter

**Additional Information**

Date Listed                      July 31st, 2025  
Days on Market                2  
Zoning                              Zone 53  
Condo Fee                        \$458

DATA IS DEEMED RELIABLE BUT IS NOT GUARANTEED ACCURATE BY THE REALTORS® ASSOCIATION OF EDMONTON. COPYRIGHT 2025 BY THE REALTORS® ASSOCIATION OF EDMONTON. ALL RIGHTS RESERVED.Trademarks are owned or controlled by the Canadian Real Estate Association (CREA) and identify real estate professionals who are members of CREA (REALTOR®, REALTORS®) and/or the quality of services they provide (MLS®, Multiple Listing Service®)  
Listing information last updated on August 2nd, 2025 at 6:17am MDT