

Courtesy Of Travis Kuhn And Joel P Teeling Of MaxWell Polaris

\$4,799,990 - 10512 Atim Road, Rural Parkland County

MLS® #E4449926

\$4,799,990

0 Bedroom, 0.00 Bathroom,
Rural on 102.00 Acres

Acheson, Rural Parkland County, AB

PRIME INVESTMENT OPPORTUNITY! 160 acres located directly on Highway 16A, just outside of Spruce Grove.

Essential Information

MLS® #	E4449926
Price	\$4,799,990
Bathrooms	0.00
Acres	102.00
Type	Rural
Sub-Type	Vacant Lot/Land
Status	Active

Community Information

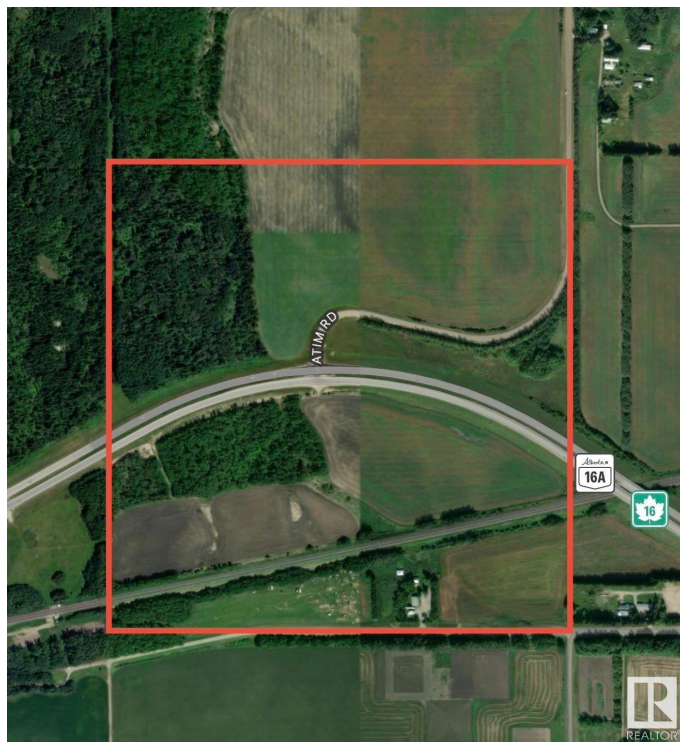
Address	10512 Atim Road
Area	Rural Parkland County
Subdivision	Acheson
City	Rural Parkland County
County	ALBERTA
Province	AB
Postal Code	T7X 6L9

Exterior

Exterior Features See Remarks

Additional Information

Date Listed July 26th, 2025



Days on Market	6
Zoning	Zone 70

DATA IS DEEMED RELIABLE BUT IS NOT GUARANTEED ACCURATE BY THE REALTORS® ASSOCIATION OF EDMONTON. COPYRIGHT 2025 BY THE REALTORS® ASSOCIATION OF EDMONTON. ALL RIGHTS RESERVED. Trademarks are owned or controlled by the Canadian Real Estate Association (CREA) and identify real estate professionals who are members of CREA (REALTOR®, REALTORS®) and/or the quality of services they provide (MLS®, Multiple Listing Service®)

Listing information last updated on August 1st, 2025 at 3:17am MDT