

## \$189,000 - 36 150 Edwards Drive, Edmonton

MLS® #E4449074

**\$189,000**

2 Bedroom, 1.00 Bathroom, 834 sqft

Condo / Townhouse on 0.00 Acres

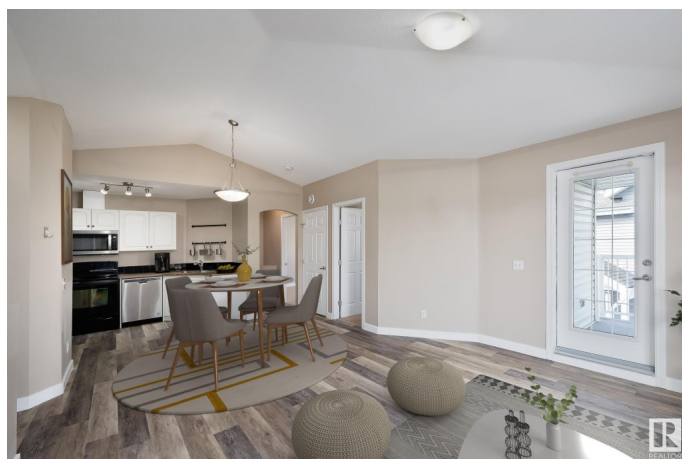
Ellerslie, Edmonton, AB

Welcome Home! This bright and well-maintained upper-floor end-unit condo offers 2 bedrooms and 1 bathroom. It is an ideal choice for first-time buyers or savvy investors. Enjoy low condo fees that include heat and water, plus a pet-friendly policy. Step into the open-concept living space featuring a functional kitchen with generous counter space and a corner pantry, all flowing seamlessly into the living and dining areas. Relax on your private balcony with views of peaceful green space – a perfect spot for morning coffee or summer evenings. The spacious primary bedroom includes a walk-in closet, while the second bedroom is perfect for guests, a home office, or a hobby room. Additional highlights include in-suite laundry, extra storage, and a powered parking stall. Ideally located near Ellerslie Road, Anthony Henday, South Edmonton Common, parks, and schools.

Built in 2005

### Essential Information

MLS® #	E4449074
Price	\$189,000
Bedrooms	2
Bathrooms	1.00
Full Baths	1



Square Footage	834
Acres	0.00
Year Built	2005
Type	Condo / Townhouse
Sub-Type	Carriage
Style	Bungalow
Status	Active

### Community Information

Address	36 150 Edwards Drive
Area	Edmonton
Subdivision	Ellerslie
City	Edmonton
County	ALBERTA
Province	AB
Postal Code	T6X 1M4

### Amenities

Amenities	Parking-Visitor
Parking	Stall

### Interior

Appliances	Dishwasher-Built-In, Dryer, Refrigerator, Stove-Electric, Washer
Heating	Forced Air-1, Natural Gas
Stories	1
Has Basement	Yes
Basement	None, No Basement

### Exterior

Exterior	Wood, Vinyl
Exterior Features	Playground Nearby, Public Transportation, Schools, Shopping Nearby
Roof	Asphalt Shingles
Construction	Wood, Vinyl
Foundation	Concrete Perimeter

### Additional Information

Date Listed	July 21st, 2025
Days on Market	5
Zoning	Zone 53

Condo Fee                    \$399

DATA IS DEEMED RELIABLE BUT IS NOT GUARANTEED ACCURATE BY THE REALTORS® ASSOCIATION OF EDMONTON. COPYRIGHT 2025 BY THE REALTORS® ASSOCIATION OF EDMONTON. ALL RIGHTS RESERVED.Trademarks are owned or controlled by the Canadian Real Estate Association (CREA) and identify real estate professionals who are members of CREA (REALTOR®, REALTORS®) and/or the quality of services they provide (MLS®, Multiple Listing Service®)

Listing information last updated on July 26th, 2025 at 9:02pm MDT