

# \$249,900 - 307 11115 80 Avenue, Edmonton

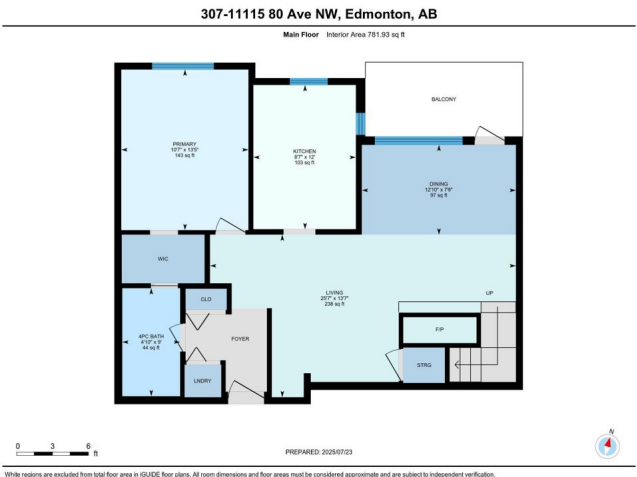
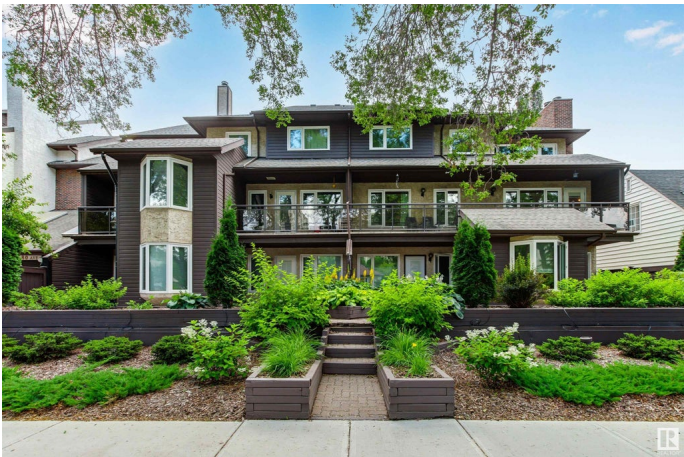
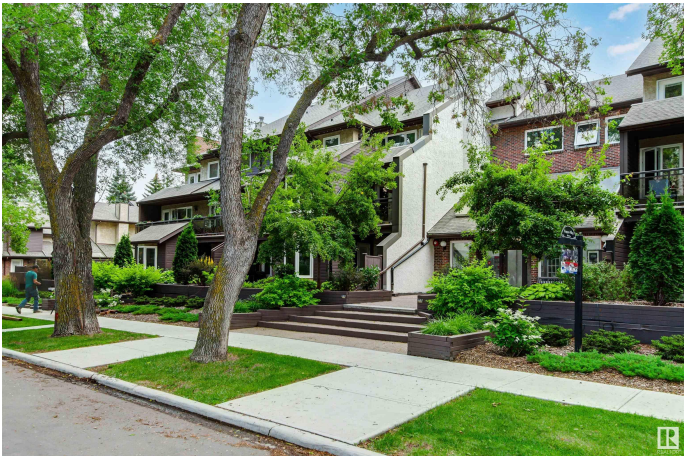
MLS® #E4448794

**\$249,900**

1 Bedroom, 1.00 Bathroom, 1,093 sqft  
Condo / Townhouse on 0.00 Acres

Garneau, Edmonton, AB

TOP FLOOR, CORNER UNIT WITH 2 UNDERGROUND, HEATED AND TITLED PARKING STALLS! Welcome to Hampton Village located on beautifully treed, quaint street that is within walking distance to the U of A, LRT, close to downtown and more. This awesome unit was freshly painted & new carpet on upper level and stairs was just installed. Main level offers living room with wood burning fire place and vaulted ceiling, full bathroom, kitchen, master bedroom and laundry. Upstairs is bright due to a skylight and you will find there an office/den and a loft area which could be used as a guests quarter, family room, art studio or whatever you want it to be. The balcony off the living room overlooks quiet street . You see crowns of the trees from every window, so it feels like leaving in the cabin! This condo has north exposure so it is cooler in the summer. Assigned storage unit completes the picture. It is available for immediate possession. Make a move!



Built in 1981

## Essential Information

MLS® #	E4448794
Price	\$249,900
Bedrooms	1

Bathrooms	1.00
Full Baths	1
Square Footage	1,093
Acres	0.00
Year Built	1981
Type	Condo / Townhouse
Sub-Type	Lowrise Apartment
Style	Multi Level Apartment
Status	Active

### **Community Information**

Address	307 11115 80 Avenue
Area	Edmonton
Subdivision	Garneau
City	Edmonton
County	ALBERTA
Province	AB
Postal Code	T6G 0R4

### **Amenities**

Amenities	Intercom, Secured Parking, Vaulted Ceiling, Vinyl Windows
Parking Spaces	2
Parking	Heated, Underground

### **Interior**

Appliances	Dishwasher-Built-In, Dryer, Hood Fan, Refrigerator, Stove-Electric, Washer
Heating	Hot Water, Natural Gas
Fireplace	Yes
Fireplaces	Mantel
# of Stories	3
Stories	2
Has Basement	Yes
Basement	None, No Basement

### **Exterior**

Exterior	Wood, Brick, Stucco
Exterior Features	Back Lane, Landscaped, Paved Lane, Public Transportation, Schools, Shopping Nearby

Roof	Asphalt Shingles
Construction	Wood, Brick, Stucco
Foundation	Concrete Perimeter

**Additional Information**

Date Listed	July 19th, 2025
Days on Market	14
Zoning	Zone 15
Condo Fee	\$757

DATA IS DEEMED RELIABLE BUT IS NOT GUARANTEED ACCURATE BY THE REALTORS® ASSOCIATION OF EDMONTON. COPYRIGHT 2025 BY THE REALTORS® ASSOCIATION OF EDMONTON. ALL RIGHTS RESERVED.Trademarks are owned or controlled by the Canadian Real Estate Association (CREA) and identify real estate professionals who are members of CREA (REALTOR®, REALTORS®) and/or the quality of services they provide (MLS®, Multiple Listing Service®)

Listing information last updated on August 2nd, 2025 at 3:02pm MDT