

Courtesy Of Christina Bieniek Of RE/MAX Real Estate

\$718,000 - 10072 90 Street, Edmonton

MLS® #E4448709

\$718,000

4 Bedroom, 3.50 Bathroom, 1,818 sqft
Single Family on 0.00 Acres

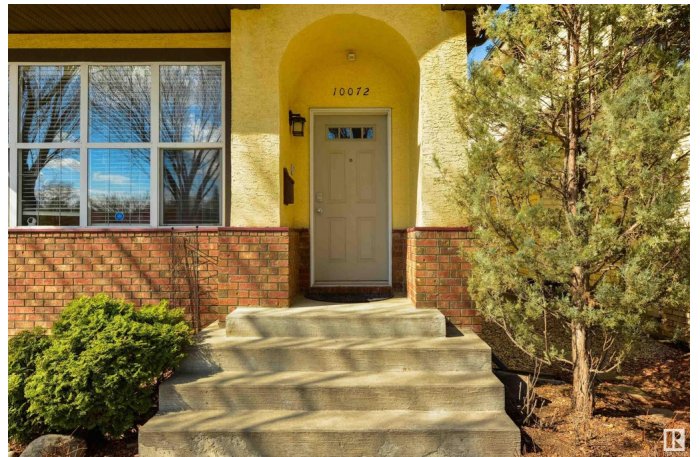
Riverdale, Edmonton, AB

Welcome to Riverdale, one of Edmonton's most desirable neighbourhoods! This home is just minutes from downtown and steps away from Riverdale Park, scenic trails, and the Riverside Golf Course. This solidly built residence features 10-foot ceilings, large windows, hardwood flooring, and a cozy gas fireplace, all within a functional open-concept layout. The spacious kitchen is equipped with stainless steel appliances, a walk-in pantry, and a central island for casual dining. Upstairs, you'll find a generously sized primary bedroom complete with an en-suite bathroom and a walk-in closet. Two additional bedrooms provide flexibility for family needs or a work-from-home setup. The fully finished basement boasts 9-foot ceilings and includes a fourth bedroom, a full bathroom, and a laundry area. There's also a theatre room, perfect for entertaining guests with movie nights or karaoke. The private backyard offers a tranquil space to relax and recharge. This property is a must-see!

Built in 2003

Essential Information

MLS® #	E4448709
Price	\$718,000
Bedrooms	4



Bathrooms	3.50
Full Baths	3
Half Baths	1
Square Footage	1,818
Acres	0.00
Year Built	2003
Type	Single Family
Sub-Type	Detached Single Family
Style	2 Storey
Status	Active

Community Information

Address	10072 90 Street
Area	Edmonton
Subdivision	Riverdale
City	Edmonton
County	ALBERTA
Province	AB
Postal Code	T5H 4P2

Amenities

Amenities	Ceiling 9 ft., Detectors Smoke, No Animal Home, No Smoking Home, Patio
Parking Spaces	2
Parking	Double Garage Detached

Interior

Interior Features	ensuite bathroom
Appliances	Air Conditioning-Central, Dishwasher-Built-In, Dryer, Garage Opener, Refrigerator, Stove-Electric, Washer
Heating	Forced Air-1, Natural Gas
Stories	3
Has Basement	Yes
Basement	Full, Finished

Exterior

Exterior	Wood, Brick, Stucco
Exterior Features	Back Lane, Fenced, Golf Nearby, Low Maintenance Landscape, Playground Nearby, Public Transportation, Schools, See Remarks

Roof	Asphalt Shingles
Construction	Wood, Brick, Stucco
Foundation	Concrete Perimeter

Additional Information

Date Listed	July 18th, 2025
-------------	-----------------

Days on Market	15
----------------	----

Zoning	Zone 13
--------	---------

DATA IS DEEMED RELIABLE BUT IS NOT GUARANTEED ACCURATE BY THE REALTORS® ASSOCIATION OF EDMONTON. COPYRIGHT 2025 BY THE REALTORS® ASSOCIATION OF EDMONTON. ALL RIGHTS RESERVED. Trademarks are owned or controlled by the Canadian Real Estate Association (CREA) and identify real estate professionals who are members of CREA (REALTOR®, REALTORS®) and/or the quality of services they provide (MLS®, Multiple Listing Service®)

Listing information last updated on August 2nd, 2025 at 1:32pm MDT