

\$550,000 - 6112 Stinson Way, Edmonton

MLS® #E4448478

\$550,000

4 Bedroom, 3.50 Bathroom, 1,875 sqft

Single Family on 0.00 Acres

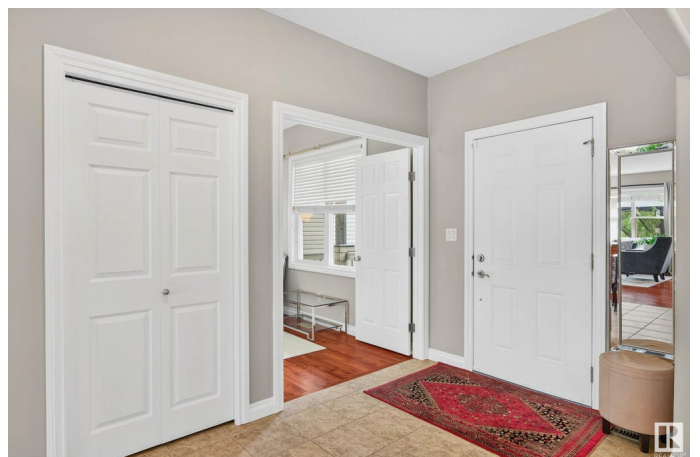
South Terwillegar, Edmonton, AB

Discover this stunning 1,875 sq. ft. home featuring 4 beds and 4 baths, including a fully finished basement! Nestled on a spacious lot in a quiet cul-de-sac, it boasts a beautifully landscaped, fully fenced yard. The heated, insulated 22x22 garage for winter & central A/C for summer. The main floor shines with a formal dining room, versatile den/office, and a large kitchen with granite countertops, a tile backsplash, stainless steel appliances, extended cabinetry, and a corner pantry. Adjacent is a cozy living room with a gas fireplace and optional surround sound, perfect for relaxing. Enjoy gorgeous hardwood floors and 9 ft ceilings throughout. Upstairs offers 3 bedrooms, 2 baths, and laundry area. The spacious master suite includes a 4-piece ensuite with a corner jet tub and a walk-in closet. The finished basement features an additional bedroom with its own ensuite and an expansive rec room, ideal for entertaining. Ample storage completes this remarkable home—your ideal family home awaits!

Built in 2007

Essential Information

MLS® #	E4448478
Price	\$550,000
Bedrooms	4



Bathrooms	3.50
Full Baths	3
Half Baths	1
Square Footage	1,875
Acres	0.00
Year Built	2007
Type	Single Family
Sub-Type	Detached Single Family
Style	2 Storey
Status	Active

Community Information

Address	6112 Stinson Way
Area	Edmonton
Subdivision	South Terwillegar
City	Edmonton
County	ALBERTA
Province	AB
Postal Code	T6K 0K2

Amenities

Amenities	On Street Parking, Deck, Detectors Smoke, No Smoking Home, See Remarks
Parking Spaces	2
Parking	Double Garage Detached, Heated

Interior

Interior Features	ensuite bathroom
Appliances	Dishwasher-Built-In, Dryer, Refrigerator, Storage Shed, Stove-Electric, Washer
Heating	Forced Air-1, Natural Gas
Fireplaces	Stone Facing
Stories	3
Has Basement	Yes
Basement	Full, Finished

Exterior

Exterior	Wood, Vinyl
Exterior Features	Airport Nearby, Cul-De-Sac, Fenced, Playground Nearby, Public

Transportation, Schools, Shopping Nearby, See Remarks

Roof	Asphalt Shingles
Construction	Wood, Vinyl
Foundation	Concrete Perimeter

School Information

Elementary	Esther Starkman
Middle	Esther Starkman
High	Lillian Osborne

Additional Information

Date Listed	July 18th, 2025
Days on Market	8
Zoning	Zone 14
HOA Fees	138
HOA Fees Freq.	Annually

DATA IS DEEMED RELIABLE BUT IS NOT GUARANTEED ACCURATE BY THE REALTORS® ASSOCIATION OF EDMONTON. COPYRIGHT 2025 BY THE REALTORS® ASSOCIATION OF EDMONTON. ALL RIGHTS RESERVED. Trademarks are owned or controlled by the Canadian Real Estate Association (CREA) and identify real estate professionals who are members of CREA (REALTOR®, REALTORS®) and/or the quality of services they provide (MLS®, Multiple Listing Service®)

Listing information last updated on July 26th, 2025 at 6:32pm MDT