

Courtesy Of Sam Killick Of ARIVL

# \$243,500 - 505 10135 Saskatchewan Drive, Edmonton

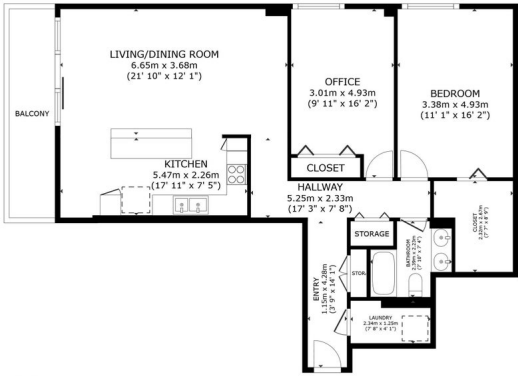
MLS® #E4447757

**\$243,500**

2 Bedroom, 1.00 Bathroom, 1,060 sqft  
Condo / Townhouse on 0.00 Acres

Strathcona, Edmonton, AB

BREATHTAKING RIVER VALLEY VIEWS!  
THIS 1060SQFT RENOVATED 2-BED  
CONDO ON SASK DR OFFERS ONE OF  
THE BEST UNOBSTRUCTED SKYLINE  
VIEWS IN EDMONTON. The stunning kitchen  
features granite counters, upgraded  
appliances, newer cabinets, and a stylish  
eat-up bar—perfect for entertaining. Both  
bedrooms are spacious enough for king beds  
and full furniture. The updated bath includes a  
double vanity and tiled tub/shower combo.  
Enjoy the view from your private balcony with  
space for full patio seating. Bonus: this unit  
has in-suite laundry—a rare perk! The  
building is well-managed, pet-friendly, and  
packed with amenities like a pool, sauna, gym,  
and more. All utilities are included in condo  
fees and located only steps from Whyte Ave,  
Strathcona Market, and a short jaunt to the  
University of Alberta Campus! Whether you're  
investing or looking to live in one of the city's  
most iconic locations, this unit delivers  
comfort, convenience, and unbeatable views.  
Don't miss out—this might be the paw-fect  
home for you!



CRANLEIGH TOWERS  
#505-10135 SASKATCHEWAN DRIVE NW  
STRATHCONA, EDMONTON

FLOOR PLAN

GROSS INTERNAL AREA  
FLOOR PLAN: 96.5 m<sup>2</sup> (1,046 sq ft)  
ENCLOSURE AREA: BALCONY: 6.7 m<sup>2</sup> (72 sq ft)  
TOTAL: 103.2 m<sup>2</sup> (1,118 sq ft)  
SIZES AND DIMENSIONS ARE APPROXIMATE, ACTUAL MAY VARY

Built in 1973

## Essential Information

MLS® # E4447757  
Price \$243,500

Bedrooms	2
Bathrooms	1.00
Full Baths	1
Square Footage	1,060
Acres	0.00
Year Built	1973
Type	Condo / Townhouse
Sub-Type	Apartment High Rise
Style	Single Level Apartment
Status	Active

### **Community Information**

Address	505 10135 Saskatchewan Drive
Area	Edmonton
Subdivision	Strathcona
City	Edmonton
County	ALBERTA
Province	AB
Postal Code	T6E 4Y9

### **Amenities**

Amenities	Exercise Room, Intercom, Parking-Visitor, Pool-Indoor, Sauna; Swirlpool; Steam, Security Door, See Remarks
Parking Spaces	1
Parking	Heated, Underground
Has Pool	Yes

### **Interior**

Appliances	Dishwasher-Built-In, Dryer, Garage Control, Hood Fan, Refrigerator, Stove-Electric, Washer, Window Coverings
Heating	Baseboard, Hot Water, Natural Gas
# of Stories	21
Stories	1
Has Basement	Yes
Basement	None, No Basement

### **Exterior**

Exterior	Concrete
Exterior Features	Golf Nearby, Public Swimming Pool, Public Transportation, River Valley

View, River View, Schools, Shopping Nearby, View City, View Downtown

Roof	Tar & Gravel
Construction	Concrete
Foundation	Concrete Perimeter

### School Information

Elementary	King Edward School
Middle	Academy at King Edward
High	Academy at King Edward

### Additional Information

Date Listed	July 15th, 2025
Days on Market	12
Zoning	Zone 15
Condo Fee	\$741

DATA IS DEEMED RELIABLE BUT IS NOT GUARANTEED ACCURATE BY THE REALTORS® ASSOCIATION OF EDMONTON. COPYRIGHT 2025 BY THE REALTORS® ASSOCIATION OF EDMONTON. ALL RIGHTS RESERVED. Trademarks are owned or controlled by the Canadian Real Estate Association (CREA) and identify real estate professionals who are members of CREA (REALTOR®, REALTORS®) and/or the quality of services they provide (MLS®, Multiple Listing Service®)

Listing information last updated on July 27th, 2025 at 3:17pm MDT