

\$395,000 - 131 1406 Hodgson Way, Edmonton

MLS® #E4447219

\$395,000

2 Bedroom, 2.00 Bathroom, 1,490 sqft
Condo / Townhouse on 0.00 Acres

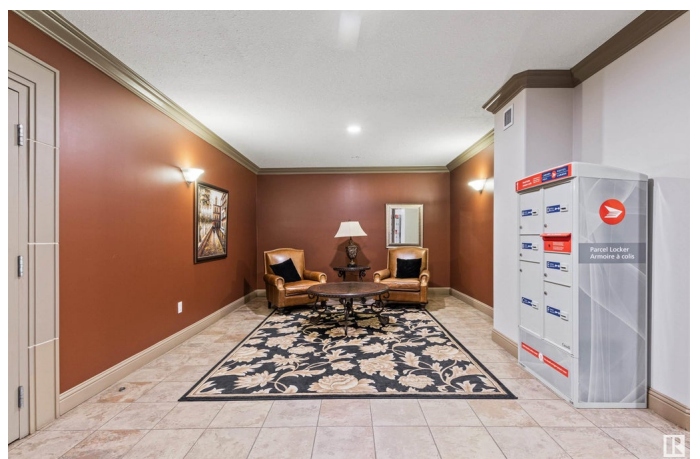
Hodgson, Edmonton, AB

Welcome to the Chateaux at Whitemud, a well-run complex with beautiful courtyard rose gardens. Overlooking a green space, this 1489 sq ft spacious two-bedroom unit also has a den that could be a great hobby room, office or for extra storage. With 9â€™™ ceilings, ceramic tile and engineered hardwood floors, this open concept main floor unit has a wonderful island kitchen with granite countertops and newer stainless-steel appliances and large living and dining rooms with ample space for lots of furniture. The huge primary bedroom has a large walk-through closet and 5-piece ensuite. Completing this floor plan is a 2nd bedroom, 3-piece bath and the laundry with new Maytag appliances. Both bedrooms and the living room have access to the lovely covered patio and green space. The building amenities include a fitness centre, carwash, a theatre room and social rooms. Save-On-Foods, Banks, Cafes, Professional Offices and the walking paths of the Whitemud Ravine are close by. It's a must to consider!

Built in 2004

Essential Information

MLS® #	E4447219
Price	\$395,000
Bedrooms	2



Bathrooms	2.00
Full Baths	2
Square Footage	1,490
Acres	0.00
Year Built	2004
Type	Condo / Townhouse
Sub-Type	Lowrise Apartment
Style	Single Level Apartment
Status	Active

Community Information

Address	131 1406 Hodgson Way
Area	Edmonton
Subdivision	Hodgson
City	Edmonton
County	ALBERTA
Province	AB
Postal Code	T6R 3K1

Amenities

Amenities	Car Wash, Ceiling 9 ft., Parking-Visitor, Party Room, Patio
Parking Spaces	1
Parking	Underground

Interior

Interior Features	ensuite bathroom
Appliances	Dishwasher-Built-In, Dryer, Microwave Hood Fan, Refrigerator, Stove-Electric, Washer, Window Coverings
Heating	Heat Pump, Natural Gas
# of Stories	4
Stories	1
Has Basement	Yes
Basement	None, No Basement

Exterior

Exterior	Wood, Metal, Stucco
Exterior Features	Flat Site, Fruit Trees/Shrubs, Golf Nearby, Public Transportation, Shopping Nearby
Roof	EPDM Membrane

Construction Wood, Metal, Stucco
Foundation Concrete Perimeter

Additional Information

Date Listed July 9th, 2025
Days on Market 9
Zoning Zone 14
Condo Fee \$821

DATA IS DEEMED RELIABLE BUT IS NOT GUARANTEED ACCURATE BY THE REALTORS® ASSOCIATION OF EDMONTON. COPYRIGHT 2025 BY THE REALTORS® ASSOCIATION OF EDMONTON. ALL RIGHTS RESERVED. Trademarks are owned or controlled by the Canadian Real Estate Association (CREA) and identify real estate professionals who are members of CREA (REALTOR®, REALTORS®) and/or the quality of services they provide (MLS®, Multiple Listing Service®)

Listing information last updated on July 18th, 2025 at 1:47am MDT