

\$465,000 - 4 Summerland Way, Sherwood Park

MLS® #E4445162

\$465,000

4 Bedroom, 3.50 Bathroom, 1,342 sqft

Single Family on 0.00 Acres

Summerwood, Sherwood Park, AB

Discover your dream home in this charming home located in Sherwood Park. This stunning two-storey residence offers a perfect blend of comfort, style, + functionality, making it ideal for families + individuals alike. Open concept main floor. Primary plus 2 bedrooms located on the upper floor, providing ample space for your family + guests. An additional bedroom is conveniently situated in the fully finished basement, perfect for the older children or creating a private office space. Total of three 4 piece bathooms plus powder room. The home boasts a large recreational room in the basement, offering an excellent space whether you envision a home theater, game room, or fitness area, this versatile space can accommodate your needs. Step outside to find a lovely back deck, perfect for enjoying morning coffee, hosting barbecues, or simply relaxing in the fresh air. The outdoor space is designed for both leisure + entertainment. This lovely home is a must-see for anyone looking to settle in Sherwood Park.

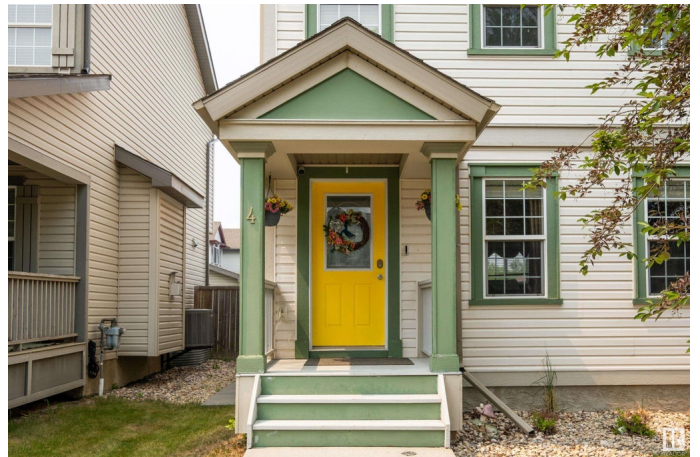
Built in 2004

Essential Information

MLS® # E4445162

Price \$465,000

Bedrooms 4



Bathrooms	3.50
Full Baths	3
Half Baths	1
Square Footage	1,342
Acres	0.00
Year Built	2004
Type	Single Family
Sub-Type	Detached Single Family
Style	2 Storey
Status	Active

Community Information

Address	4 Summerland Way
Area	Sherwood Park
Subdivision	Summerwood
City	Sherwood Park
County	ALBERTA
Province	AB
Postal Code	T8H 2P2

Amenities

Amenities	Deck, Detectors Smoke
Parking Spaces	2
Parking	Double Garage Detached

Interior

Interior Features	ensuite bathroom
Appliances	Alarm/Security System, Dishwasher-Built-In, Dryer, Garage Control, Garage Opener, Microwave Hood Fan, Refrigerator, Stove-Electric, Washer, Window Coverings
Heating	Forced Air-1, Natural Gas
Fireplace	Yes
Fireplaces	Mantel
Stories	3
Has Basement	Yes
Basement	Full, Finished

Exterior

Exterior	Wood, Vinyl
----------	-------------

Exterior Features	Fenced, Flat Site, Golf Nearby, Landscaped, Playground Nearby, Public Transportation, Schools, Shopping Nearby
Roof	Asphalt Shingles
Construction	Wood, Vinyl
Foundation	Concrete Perimeter

Additional Information

Date Listed	July 1st, 2025
Days on Market	6
Zoning	Zone 25

DATA IS DEEMED RELIABLE BUT IS NOT GUARANTEED ACCURATE BY THE REALTORS® ASSOCIATION OF EDMONTON. COPYRIGHT 2025 BY THE REALTORS® ASSOCIATION OF EDMONTON. ALL RIGHTS RESERVED.Trademarks are owned or controlled by the Canadian Real Estate Association (CREA) and identify real estate professionals who are members of CREA (REALTOR®, REALTORS®) and/or the quality of services they provide (MLS®, Multiple Listing Service®)

Listing information last updated on July 7th, 2025 at 3:32pm MDT