

Courtesy Of Douglas B Purdy Of RE/MAX River City

## \$475,000 - 42 Greenbrier Crescent, St. Albert

MLS® #E4444726

**\$475,000**

4 Bedroom, 2.50 Bathroom, 1,290 sqft

Single Family on 0.00 Acres

Grandin, St. Albert, AB

Discover Grandin Charm: A Delightfully Updated Bungalow! This PURDY NICE 1289 sqft bungalow in desirable Grandin greets you with curb appeal and seasonal perennials.

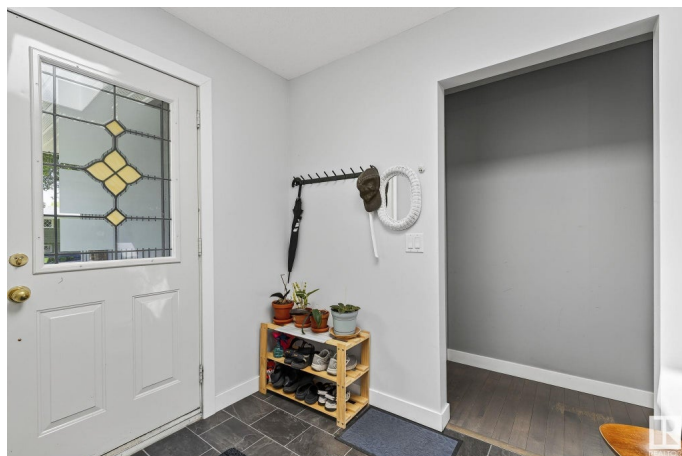
Inside, a skylit entry opens to a spacious living room with brick wood-burning fireplace and big windows. The dining nook flows into a stunning island kitchen—renovated with stainless steel appliances, ample cabinetry, wine rack & walk-in pantry. Down the hall: 3 bedrooms, updated 4-pc bath, and a roomy primary with 2-pc ensuite & double closets. Enjoy the large yard with a partially covered deck and room for a future garage.

Downstairs: a huge family room with vintage wet bar, 2nd fireplace, 3-pc bath, versatile 4th room/office, laundry, and storage. Updates include: newer roof, furnace, hot water tank & central A/C. This Grandin gem blends classic charm with modern updates for a truly PURDY NICE lifestyle!

Built in 1972

### Essential Information

MLS® #	E4444726
Price	\$475,000
Bedrooms	4
Bathrooms	2.50
Full Baths	2



Half Baths	1
Square Footage	1,290
Acres	0.00
Year Built	1972
Type	Single Family
Sub-Type	Detached Single Family
Style	Bungalow
Status	Active

### **Community Information**

Address	42 Greenbrier Crescent
Area	St. Albert
Subdivision	Grandin
City	St. Albert
County	ALBERTA
Province	AB
Postal Code	T8N 1A3

### **Amenities**

Amenities	Air Conditioner, Bar, Closet Organizers, Deck, No Animal Home, No Smoking Home, Skylight
Parking	Front Drive Access, Parking Pad Cement/Paved

### **Interior**

Interior Features	ensuite bathroom
Appliances	Air Conditioning-Central, Dishwasher-Built-In, Microwave Hood Fan, Refrigerator, Storage Shed, Stove-Electric, Washer, Wine/Beverage Cooler
Heating	Forced Air-1, Natural Gas
Fireplace	Yes
Fireplaces	Brick Facing
Stories	2
Has Basement	Yes
Basement	Full, Finished

### **Exterior**

Exterior	Wood, Stucco
Exterior Features	Cross Fenced, Golf Nearby, Landscaped, Low Maintenance Landscape, Playground Nearby, Public Swimming Pool, Public Transportation, Shopping Nearby

Roof	Asphalt Shingles
Construction	Wood, Stucco
Foundation	Concrete Perimeter

**Additional Information**

Date Listed	June 27th, 2025
Days on Market	4
Zoning	Zone 24

DATA IS DEEMED RELIABLE BUT IS NOT GUARANTEED ACCURATE BY THE REALTORS® ASSOCIATION OF EDMONTON. COPYRIGHT 2025 BY THE REALTORS® ASSOCIATION OF EDMONTON. ALL RIGHTS RESERVED.Trademarks are owned or controlled by the Canadian Real Estate Association (CREA) and identify real estate professionals who are members of CREA (REALTOR®, REALTORS®) and/or the quality of services they provide (MLS®, Multiple Listing Service®)

Listing information last updated on July 1st, 2025 at 3:47pm MDT