

# \$539,900 - 28 Springhaven Close, Spruce Grove

MLS® #E4444306

**\$539,900**

3 Bedroom, 3.50 Bathroom, 1,770 sqft  
Single Family on 0.00 Acres

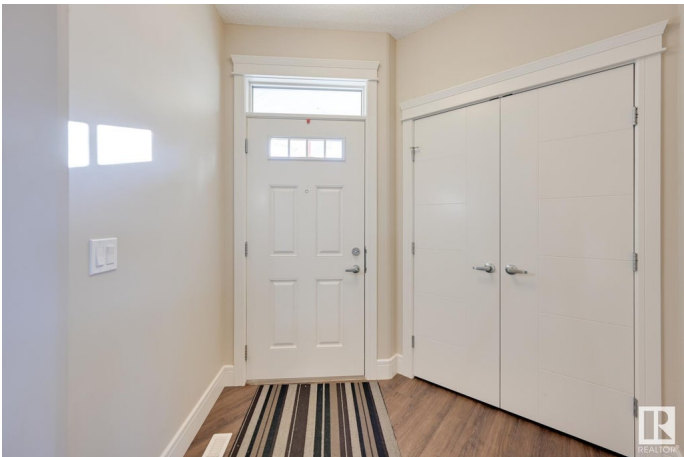
Spruce Ridge, Spruce Grove, AB

Welcome to this inviting single-family home that blends comfort, function, and style, perfect for growing families or anyone looking for extra space. Step inside to a bright and open main floor featuring a cozy living room, a welcoming dining area, a convenient half bathroom, and a modern kitchen complete with stainless steel appliances. Upstairs, you'll find three spacious bedrooms and two full bathrooms, including a private ensuite in the serene primary suite. A generous bonus room adds flexibility for a home office, playroom, or cozy movie nights. The fully finished basement offers even more space with a large second living area and a 4-piece bathroom, ideal for guests or family hangouts. Outside, enjoy summer days on the sunny deck and make use of the large backyard and handy storage shed. With a double attached garage and close proximity to schools, shopping, and essential amenities, this is a place youâ€™™ll be proud to call home!

Built in 2017

## Essential Information

MLS® #	E4444306
Price	\$539,900
Bedrooms	3
Bathrooms	3.50
Full Baths	3



Half Baths	1
Square Footage	1,770
Acres	0.00
Year Built	2017
Type	Single Family
Sub-Type	Detached Single Family
Style	2 Storey
Status	Active

### Community Information

Address	28 Springhaven Close
Area	Spruce Grove
Subdivision	Spruce Ridge
City	Spruce Grove
County	ALBERTA
Province	AB
Postal Code	T7X 0V1

### Amenities

Amenities	See Remarks
Parking Spaces	4
Parking	Double Garage Attached

### Interior

Interior Features	ensuite bathroom
Appliances	Dishwasher-Built-In, Dryer, Garage Control, Garage Opener, Refrigerator, Storage Shed, Stove-Electric, Washer
Heating	Forced Air-1, Natural Gas
Stories	3
Has Basement	Yes
Basement	Full, Finished

### Exterior

Exterior	Wood, Vinyl
Exterior Features	Playground Nearby, Public Swimming Pool, Public Transportation, Schools, Shopping Nearby, See Remarks
Roof	Asphalt Shingles
Construction	Wood, Vinyl
Foundation	Concrete Perimeter

**School Information**

Elementary	Brookwood School
Middle	Greystone Centennial
High	Spruce Grove Composite

**Additional Information**

Date Listed	June 25th, 2025
Days on Market	5
Zoning	Zone 91

DATA IS DEEMED RELIABLE BUT IS NOT GUARANTEED ACCURATE BY THE REALTORS® ASSOCIATION OF EDMONTON. COPYRIGHT 2025 BY THE REALTORS® ASSOCIATION OF EDMONTON. ALL RIGHTS RESERVED.Trademarks are owned or controlled by the Canadian Real Estate Association (CREA) and identify real estate professionals who are members of CREA (REALTOR®, REALTORS®) and/or the quality of services they provide (MLS®, Multiple Listing Service®)

Listing information last updated on June 30th, 2025 at 9:32am MDT