

\$250,000 - 11313 87 Street, Edmonton

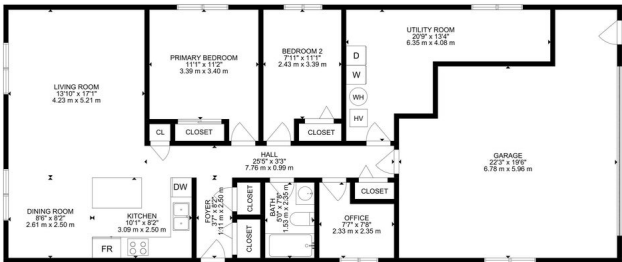
MLS® #E4443839

\$250,000

2 Bedroom, 1.00 Bathroom, 1,184 sqft
Single Family on 0.00 Acres

Parkdale (Edmonton), Edmonton, AB

Perfect for first-time buyers or savvy investors, this bungalow offers 2 good size bedrooms plus a versatile office space, ideal for working from home or extra storage. The tiled foyer leads into a spacious kitchen featuring ample cabinetry and a large eat-up island, seamlessly flowing into the open dining and sun-filled living room, complete with a built-in wall unit for added character and convenience. A full tiled bathroom, dedicated laundry room, and generous storage options enhance everyday living. Outside, enjoy the perks of an oversized heated attached garage, a new furnace, central A/C, 100-amp electrical service, and a security system for peace of mind. Tucked away yet close to everything, this hidden gem is one you donâ€™t want to miss!



Built in 1981

Essential Information

MLS® #	E4443839
Price	\$250,000
Bedrooms	2
Bathrooms	1.00
Full Baths	1
Square Footage	1,184
Acres	0.00
Year Built	1981

GROSS INTERNAL AREA
MAIN LEVEL: 1184 SQ. FT. 110 m²
EXCLUDED AREAS: GARAGE: 452 SQ. FT. 42 m²
TOTAL: 1184 SQ. FT. 110 m²
SIZE AND DIMENSIONS ARE APPROXIMATE. ACTUAL MAY VARY

Type	Single Family
Sub-Type	Detached Single Family
Style	Bungalow
Status	Active

Community Information

Address	11313 87 Street
Area	Edmonton
Subdivision	Parkdale (Edmonton)
City	Edmonton
County	ALBERTA
Province	AB
Postal Code	T5V 3L8

Amenities

Amenities	On Street Parking, Air Conditioner, Crawl Space, No Animal Home, Parking-Extra
Parking	Double Garage Attached

Interior

Appliances	Air Conditioning-Central, Alarm/Security System, Dishwasher-Built-In, Dryer, Fan-Ceiling, Furniture Included, Hood Fan, Refrigerator, Stove-Electric, Vacuum System Attachments, Vacuum Systems, Washer
Heating	Forced Air-1, Natural Gas
Stories	1
Has Basement	Yes
Basement	None, No Basement

Exterior

Exterior	Wood, Stucco, Vinyl
Exterior Features	Back Lane, Fenced, Flat Site, Public Transportation, Schools
Roof	Asphalt Shingles
Construction	Wood, Stucco, Vinyl
Foundation	Concrete Perimeter

Additional Information

Date Listed	June 23rd, 2025
Days on Market	13
Zoning	Zone 05

DATA IS DEEMED RELIABLE BUT IS NOT GUARANTEED ACCURATE BY THE REALTORS® ASSOCIATION OF EDMONTON. COPYRIGHT 2025 BY THE REALTORS® ASSOCIATION OF EDMONTON. ALL RIGHTS RESERVED. Trademarks are owned or controlled by the Canadian Real Estate Association (CREA) and identify real estate professionals who are members of CREA (REALTOR®, REALTORS®) and/or the quality of services they provide (MLS®, Multiple Listing Service®)

Listing information last updated on July 6th, 2025 at 3:02pm MDT