

## \$658,000 - 10 Stoneshire Manor, Spruce Grove

MLS® #E4443526

**\$658,000**

5 Bedroom, 4.00 Bathroom, 2,172 sqft

Single Family on 0.00 Acres

Stoneshire, Spruce Grove, AB

Unique 5-bedroom, 4-bathroom bungalow in the highly sought-after community of Stoneshire. What sets this sprawling bungalow apart? It's rare upper-level loft suite featuring its own bedroom, 3-piece ensuite, and private retreatâ€”ideal for a teenager, guests, or anyone craving a little extra privacy.

The main floor impresses with hardwood flooring, 2 cozy gas fireplaces, formal dining, and a spa-like primary ensuite. You'll love the slate appliances, high ceilings with elegant crown moulding, and open layout perfect for entertaining. Just wait until you see the expansive finished basement and oversized heated garage. Enjoy outdoor living on the covered rear deck, overlooking a large, private backyardâ€”complete with your very own hot tub for year-round enjoyment! Nestled in a quiet cul-de sac in the heart of Spruce Grove, you're just steps from The Links Golf Course, walking trails, schools, major amenities, and commuter routes.

Built in 1993

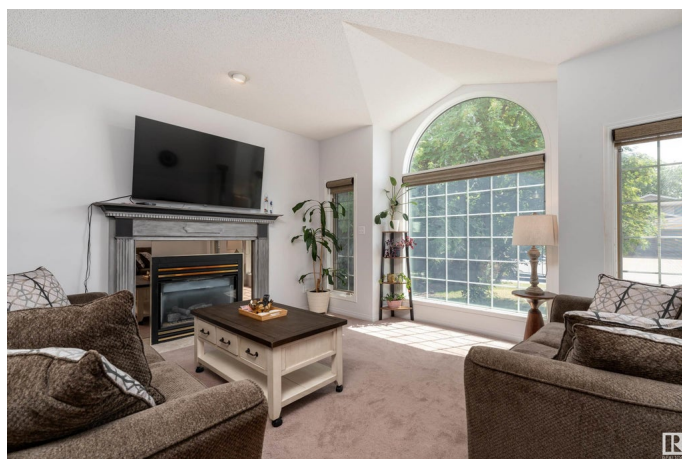
### Essential Information

MLS® # E4443526

Price \$658,000

Bedrooms 5

Bathrooms 4.00



Full Baths	4
Square Footage	2,172
Acres	0.00
Year Built	1993
Type	Single Family
Sub-Type	Detached Single Family
Style	Bungalow
Status	Active

### Community Information

Address	10 Stoneshire Manor
Area	Spruce Grove
Subdivision	Stoneshire
City	Spruce Grove
County	ALBERTA
Province	AB
Postal Code	T7X 3E3

### Amenities

Amenities	Deck, Hot Tub
Parking	Double Garage Attached, Front Drive Access

### Interior

Interior Features	ensuite bathroom
Appliances	Dishwasher-Built-In, Dryer, Garage Control, Garage Opener, Microwave Hood Fan, Refrigerator, Stove-Electric, Vacuum System Attachments, Vacuum Systems, Washer, Garage Heater, Hot Tub
Heating	Forced Air-2, Natural Gas
Fireplace	Yes
Fireplaces	Stone Facing
Stories	3
Has Basement	Yes
Basement	Full, Finished

### Exterior

Exterior	Wood, Stucco
Exterior Features	Cul-De-Sac, Fenced, Flat Site, Golf Nearby, Playground Nearby, Schools, Shopping Nearby
Roof	Cedar Shakes

Construction	Wood, Stucco
Foundation	Concrete Perimeter

**School Information**

Elementary	Brookwood School
Middle	Woodhaven Middle School
High	Spruce Grove Composite

**Additional Information**

Date Listed	June 20th, 2025
Days on Market	61
Zoning	Zone 91

DATA IS DEEMED RELIABLE BUT IS NOT GUARANTEED ACCURATE BY THE REALTORS® ASSOCIATION OF EDMONTON. COPYRIGHT 2025 BY THE REALTORS® ASSOCIATION OF EDMONTON. ALL RIGHTS RESERVED.Trademarks are owned or controlled by the Canadian Real Estate Association (CREA) and identify real estate professionals who are members of CREA (REALTOR®, REALTORS®) and/or the quality of services they provide (MLS®, Multiple Listing Service®)

Listing information last updated on August 20th, 2025 at 4:32pm MDT