

\$164,900 - 302 11330 108 Avenue, Edmonton

MLS® #E4443480

\$164,900

2 Bedroom, 1.50 Bathroom, 909 sqft

Condo / Townhouse on 0.00 Acres

Queen Mary Park, Edmonton, AB

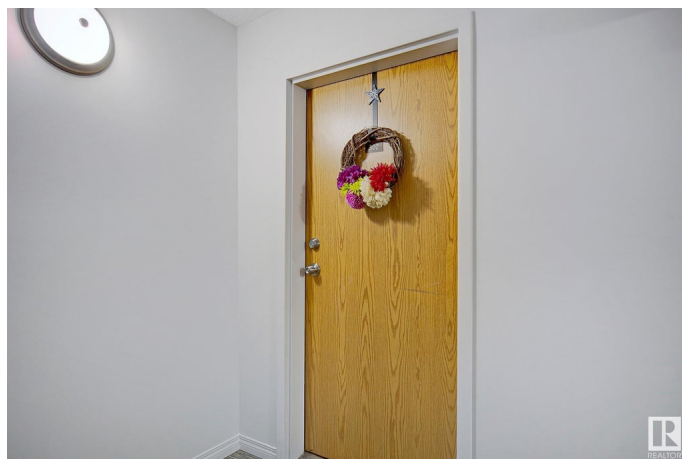
Welcome to this top floor unit in Queen Mary Park! This 2 bedroom unit with in suite laundry is MOVE IN READY & awaiting only you! At almost 1000sqft this condo will surprise you! 2 pc ensuite, additional full bathroom, large bright rooms, wood burning fireplace, newer appliances & upgrades galore! Abundance of storage & large windows to a private balcony overlooking a mature street scape will leave you feeling like "home" is the only place to be! You will love the natural light, neutral colors, & open concept living from the moment you step through the door! Kitchen boasts SS appliances, upgraded counters & loads of cabinetry. Designated dining/eat in kitchen nestled near a large living room is IDEAL for entertaining & offers access to a private deck with storage room! This vibrant neighborhood features amazing shopping, restaurants, parks, playgrounds and amenities all within walking distance. Minutes from downtown, Grant MacEwan, NAIT and the Brewery District! Live your best and most convenient life!

Built in 1981

Essential Information

MLS® # E4443480

Price \$164,900



Bedrooms	2
Bathrooms	1.50
Full Baths	1
Half Baths	1
Square Footage	909
Acres	0.00
Year Built	1981
Type	Condo / Townhouse
Sub-Type	Lowrise Apartment
Style	Single Level Apartment
Status	Active

Community Information

Address	302 11330 108 Avenue
Area	Edmonton
Subdivision	Queen Mary Park
City	Edmonton
County	ALBERTA
Province	AB
Postal Code	T5H 1B6

Amenities

Amenities	On Street Parking, Closet Organizers, Deck, No Animal Home, No Smoking Home, Parking-Plug-Ins, Storage-In-Suite
Parking Spaces	1
Parking	Stall

Interior

Interior Features	ensuite bathroom
Appliances	Dishwasher-Built-In, Dryer, Oven-Microwave, Refrigerator, Stove-Electric, Washer, Window Coverings
Heating	Baseboard, Hot Water, Natural Gas
Fireplace	Yes
Fireplaces	Corner
# of Stories	3
Stories	1
Has Basement	Yes
Basement	None, No Basement

Exterior

Exterior	Wood, Vinyl
Exterior Features	Public Transportation, Schools, Shopping Nearby
Roof	Asphalt Shingles
Construction	Wood, Vinyl
Foundation	Concrete Perimeter

Additional Information

Date Listed	June 20th, 2025
Days on Market	3
Zoning	Zone 08
Condo Fee	\$536

DATA IS DEEMED RELIABLE BUT IS NOT GUARANTEED ACCURATE BY THE REALTORS® ASSOCIATION OF EDMONTON. COPYRIGHT 2025 BY THE REALTORS® ASSOCIATION OF EDMONTON. ALL RIGHTS RESERVED.Trademarks are owned or controlled by the Canadian Real Estate Association (CREA) and identify real estate professionals who are members of CREA (REALTOR®, REALTORS®) and/or the quality of services they provide (MLS®, Multiple Listing Service®)

Listing information last updated on June 23rd, 2025 at 6:02am MDT