

# **\$209,900 - 116 5816 Mullen Place, Edmonton**

MLS® #E4441681

**\$209,900**

2 Bedroom, 2.00 Bathroom, 690 sqft

Condo / Townhouse on 0.00 Acres

MacTaggart, Edmonton, AB

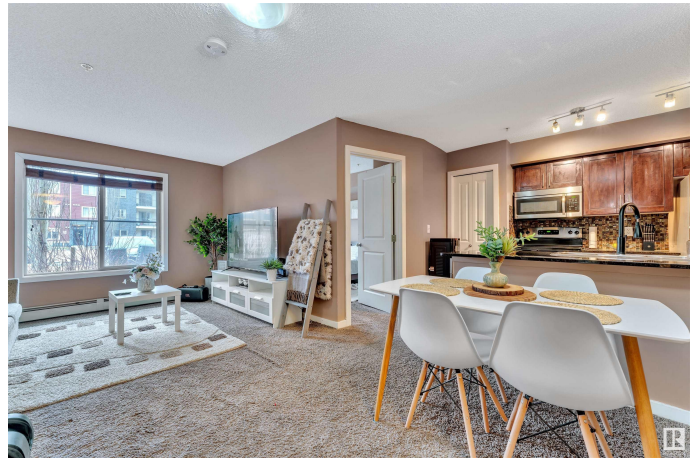
Welcome to this ELEGANT & IMMACULATELY MAINTAINED 2 BED, 2 BATH condo. Perfectly situated just off Anthony Henday Drive & Rabbit Hill Road, this unit offers exceptional convenience with all major amenities just minutes away, including CURRENT PLAZA for shopping, restaurants, parks & public transit. This main floor unit provides easy access—no stairs or elevators needed—ideal for all lifestyles! Enjoy 2 dedicated parking spots, including UNDERGROUND HEATED stall for added comfort year-round. Many builder upgrades provided including luxury & UPDATED BATH TUBS, KITCHEN & FLOORING giving it modern & upscale feel. Spacious open-concept layout w/great natural light, a well-sized kitchen w/complementing GRANITE Countertops, BAR SEATING & STAINLESS STEEL Appliances, in-suite laundry & generous bedroom sizes make this the perfect place to call home or invest. Steps from the LUSH GREEN walking trails to enjoy the outdoor life, Don't miss out on this opportunity to live in a prime location w/convenience & style!

Built in 2016

## **Essential Information**

MLS® #

E4441681



|                |                        |
|----------------|------------------------|
| Price          | \$209,900              |
| Bedrooms       | 2                      |
| Bathrooms      | 2.00                   |
| Full Baths     | 2                      |
| Square Footage | 690                    |
| Acres          | 0.00                   |
| Year Built     | 2016                   |
| Type           | Condo / Townhouse      |
| Sub-Type       | Lowrise Apartment      |
| Style          | Single Level Apartment |
| Status         | Active                 |

### Community Information

|             |                       |
|-------------|-----------------------|
| Address     | 116 5816 Mullen Place |
| Area        | Edmonton              |
| Subdivision | MacTaggart            |
| City        | Edmonton              |
| County      | ALBERTA               |
| Province    | AB                    |
| Postal Code | T6R 0W3               |

### Amenities

|                |                              |
|----------------|------------------------------|
| Amenities      | Detectors Smoke, See Remarks |
| Parking Spaces | 2                            |
| Parking        | Heated, Stall, Underground   |

### Interior

|                   |  |
|-------------------|--|
| Interior Features | ensuite bathroom   |
| Appliances        | Dishwasher-Built-In, Garage Opener, Microwave Hood Fan, Refrigerator, Stacked Washer/Dryer, Stove-Electric |
| Heating           | Baseboard, Natural Gas   |
| # of Stories      | 4  |
| Stories           | 1  |
| Has Basement      | Yes  |
| Basement          | None, No Basement  |

### Exterior

|                   |   |
|-------------------|---|
| Exterior          | Wood, Stone, Vinyl  |
| Exterior Features | Golf Nearby, Playground Nearby, Public Transportation, Schools, |

|              |                    |
|--------------|--------------------|
|              | Shopping Nearby    |
| Roof         | Asphalt Shingles   |
| Construction | Wood, Stone, Vinyl |
| Foundation   | Concrete Perimeter |

### **Additional Information**

|                |                 |
|----------------|-----------------|
| Date Listed    | June 11th, 2025 |
| Days on Market | 67              |
| Zoning         | Zone 14         |
| Condo Fee      | \$336           |

DATA IS DEEMED RELIABLE BUT IS NOT GUARANTEED ACCURATE BY THE REALTORS® ASSOCIATION OF EDMONTON. COPYRIGHT 2025 BY THE REALTORS® ASSOCIATION OF EDMONTON. ALL RIGHTS RESERVED. Trademarks are owned or controlled by the Canadian Real Estate Association (CREA) and identify real estate professionals who are members of CREA (REALTOR®, REALTORS®) and/or the quality of services they provide (MLS®, Multiple Listing Service®)

Listing information last updated on August 17th, 2025 at 2:02pm MDT