

## **\$948,800 - 892 Hollands Landing, Edmonton**

MLS® #E4441124

**\$948,800**

5 Bedroom, 3.50 Bathroom, 3,028 sqft

Single Family on 0.00 Acres

Hodgson, Edmonton, AB

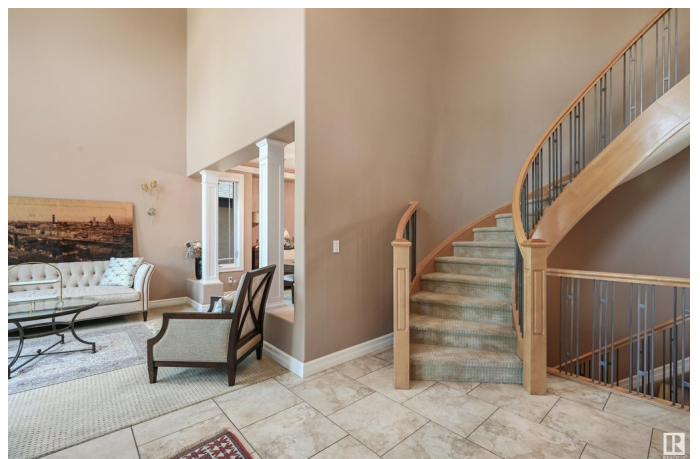
Stunning, beautifully maintained custom Fekete built home in the prestigious Estates of Whitemud Ridge. Located just a stone's throw from the Ravine/trails & park/playground. 3028 sf open floor plan w/a sweeping curved stairwells, 18 ft ceilings & large windows which allow streams of natural light in. Beautiful finishes & upgrades- Granite wet bar, in floor heating, steam showers & so much more. Formal living/dining rm plus a main floor den & family rm w/soaring vaults. New carpet FR/den. 4 Spacious bedrms upstairs & 2 more in the professionally finished lower level along w/a rec rm & full bathrm). Gorgeous master suite w/a huge W/I closet, FP & dream spa ensuite. A/C & TRIPLE finished garage which features a rear garage overhead door for access to an aggregate pad for additional storage of boats, ATV or a small trailer. Beautiful private treed SW facing yard w/a waterfall & pond. Lots of space to entertain outdoors. Quick access to shopping, schools & the Rec Centre. Easy access to U of A & downtown

Built in 2004

### **Essential Information**

MLS® # E4441124

Price \$948,800



Bedrooms	5
Bathrooms	3.50
Full Baths	3
Half Baths	1
Square Footage	3,028
Acres	0.00
Year Built	2004
Type	Single Family
Sub-Type	Detached Single Family
Style	2 Storey
Status	Active

### Community Information

Address	892 Hollands Landing
Area	Edmonton
Subdivision	Hodgson
City	Edmonton
County	ALBERTA
Province	AB
Postal Code	T6R 3L2

### Amenities

Amenities	Deck, Detectors Smoke
Parking	Insulated, Triple Garage Attached

### Interior

Interior Features	ensuite bathroom
Appliances	Dishwasher-Built-In, Dryer, Garage Opener, Refrigerator, Storage Shed, Stove-Gas, Vacuum Systems, Washer
Heating	Forced Air-2, In Floor Heat System, Natural Gas
Fireplace	Yes
Fireplaces	Three Sided
Stories	3
Has Basement	Yes
Basement	Full, Finished

### Exterior

Exterior	Wood, Stone, Stucco
Exterior Features	Fenced, Landscaped, No Back Lane, Public Transportation, Schools,

	Shopping Nearby
Roof	Asphalt Shingles
Construction	Wood, Stone, Stucco
Foundation	Concrete Perimeter

### School Information

Elementary	JosephMacneil/Brander
Middle	JosephMacneil/Riverbend
High	MMM/LillianOsborne

### Additional Information

Date Listed	June 6th, 2025
Days on Market	9
Zoning	Zone 14
HOA Fees	175
HOA Fees Freq.	Annually

DATA IS DEEMED RELIABLE BUT IS NOT GUARANTEED ACCURATE BY THE REALTORS® ASSOCIATION OF EDMONTON. COPYRIGHT 2025 BY THE REALTORS® ASSOCIATION OF EDMONTON. ALL RIGHTS RESERVED.Trademarks are owned or controlled by the Canadian Real Estate Association (CREA) and identify real estate professionals who are members of CREA (REALTOR®, REALTORS®) and/or the quality of services they provide (MLS®, Multiple Listing Service®)

Listing information last updated on June 15th, 2025 at 1:47pm MDT