

## \$549,888 - 524 Ormsby Road, Edmonton

MLS® #E4440520

**\$549,888**

4 Bedroom, 3.50 Bathroom, 2,268 sqft

Single Family on 0.00 Acres

Ormsby Place, Edmonton, AB

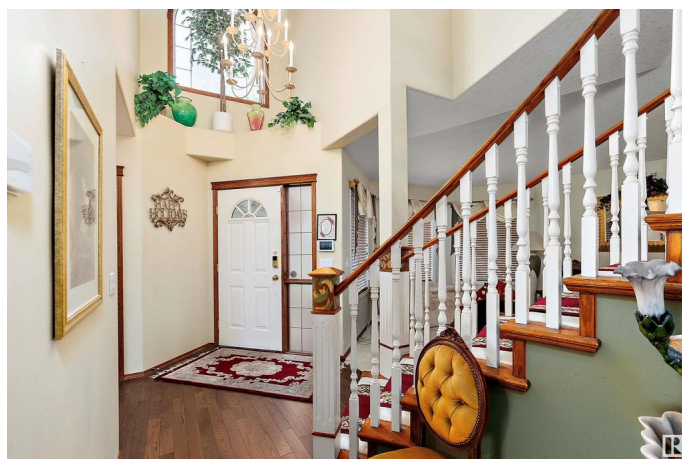
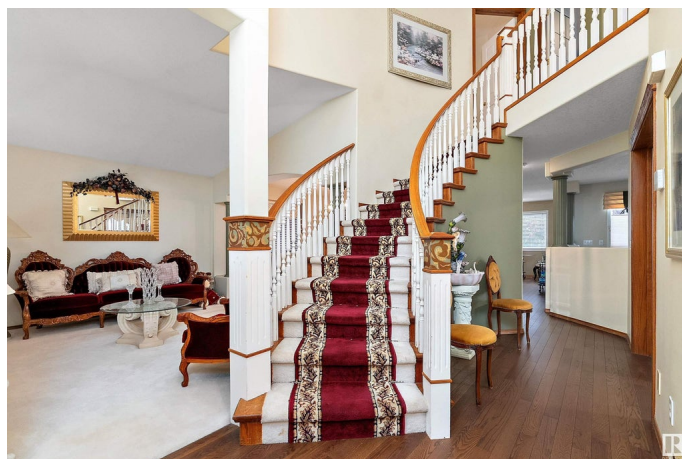
Elegant, upgraded & move-in ready! This beautifully renovated 4-bed, 3.5-bath home offers over 3,300 sq ft of refined living space. Be greeted by a grand foyer with soaring ceilings & a curved staircase. The chef's kitchen boasts granite counters, rich cabinetry, stainless steel appliances & a massive island—ideal for entertaining. Bright living & dining areas flow effortlessly. Upstairs, the spacious primary suite features a walk-in closet & spa-inspired ensuite. The fully finished basement is a showstopper: large rec room, home gym, guest bedroom, stylish 3-pc bath, wet bar with pendant lighting, & projector screen. Updated bathrooms, new flooring, central A/C, cozy gas fireplace & oversized garage provide comfort. Outdoors, enjoy a private landscaped yard with mature flowering trees, lamppost lighting & patio seating. Quiet Ormsby Place location near parks, top-rated schools, shopping, transit & minutes to Anthony Henday & Whitemud Dr. —an ideal family home! A RARE OPPORTUNITY YOU CANNOT MISS! Hurry!

Built in 1997

### Essential Information

MLS® # E4440520

Price \$549,888



Bedrooms	4
Bathrooms	3.50
Full Baths	3
Half Baths	1
Square Footage	2,268
Acres	0.00
Year Built	1997
Type	Single Family
Sub-Type	Detached Single Family
Style	2 Storey
Status	Active

### Community Information

Address	524 Ormsby Road
Area	Edmonton
Subdivision	Ormsby Place
City	Edmonton
County	ALBERTA
Province	AB
Postal Code	T5T 6G8

### Amenities

Amenities	Air Conditioner, Bar, Closet Organizers, Deck, Parking-Extra, See Remarks
Parking	Double Garage Attached

### Interior

Interior Features	ensuite bathroom
Appliances	Air Conditioning-Central, Dishwasher-Built-In, Dryer, Garage Control, Garage Opener, Microwave Hood Fan, Refrigerator, Stove-Electric, Washer
Heating	Forced Air-1, Natural Gas
Stories	3
Has Basement	Yes
Basement	Full, Finished

### Exterior

Exterior	Wood, Vinyl
Exterior Features	Fenced, Flat Site, Landscaped, Playground Nearby, Public

Transportation, Schools, Shopping Nearby, See Remarks

Roof	Asphalt Shingles
Construction	Wood, Vinyl
Foundation	Concrete Perimeter

### School Information

Elementary	Ormsby School (K-6)
Middle	S. Bruce Smith School
High	Jasper Place School

### Additional Information

Date Listed	June 5th, 2025
Days on Market	11
Zoning	Zone 20

DATA IS DEEMED RELIABLE BUT IS NOT GUARANTEED ACCURATE BY THE REALTORS® ASSOCIATION OF EDMONTON. COPYRIGHT 2025 BY THE REALTORS® ASSOCIATION OF EDMONTON. ALL RIGHTS RESERVED. Trademarks are owned or controlled by the Canadian Real Estate Association (CREA) and identify real estate professionals who are members of CREA (REALTOR®, REALTORS®) and/or the quality of services they provide (MLS®, Multiple Listing Service®)

Listing information last updated on June 16th, 2025 at 9:17am MDT