

## \$499,998 - 4280 Kinglet Drive, Edmonton

MLS® #E4440008

**\$499,998**

4 Bedroom, 2.50 Bathroom, 1,212 sqft

Single Family on 0.00 Acres

Kinglet Gardens, Edmonton, AB

Welcome to this brand new home the **â€œBentleyâ€** Built by Broadview Homes and is located in one of North West Edmonton's newest premier communities of Kinglet Gardens. With just over 1200 square Feet this home comes single parking pad, this opportunity is perfect for a young family or young couple. Your main floor is complete with luxury Vinyl plank flooring throughout the great room and the kitchen. Highlighted in your new kitchen are upgraded cabinets, upgraded counter tops and a tile back splash. Finishing off the main level is a 2 piece bathroom. The upper level has 3 bedrooms and 2 full bathrooms that is perfect for a first time buyer. This home also comes with a fully finished legal basement suite perfect for a first time investor or a mortgage helper \*\*\* This home is under construction and slated to be completed summer/Fall of this year\*\*\*\*



Built in 2025

### Essential Information

|            |           |
|------------|-----------|
| MLS® #     | E4440008  |
| Price      | \$499,998 |
| Bedrooms   | 4         |
| Bathrooms  | 2.50      |
| Full Baths | 2         |
| Half Baths | 1         |

|                |                        |
|----------------|------------------------|
| Square Footage | 1,212                  |
| Acres          | 0.00                   |
| Year Built     | 2025                   |
| Type           | Single Family          |
| Sub-Type       | Detached Single Family |
| Style          | 2 Storey               |
| Status         | Active                 |

## Community Information

|             |                    |
|-------------|--------------------|
| Address     | 4280 Kinglet Drive |
| Area        | Edmonton           |
| Subdivision | Kinglet Gardens    |
| City        | Edmonton           |
| County      | ALBERTA            |
| Province    | AB                 |
| Postal Code | T5S 0T1            |

## Amenities

|           |                          |
|-----------|--------------------------|
| Amenities | See Remarks              |
| Parking   | Parking Pad Cement/Paved |

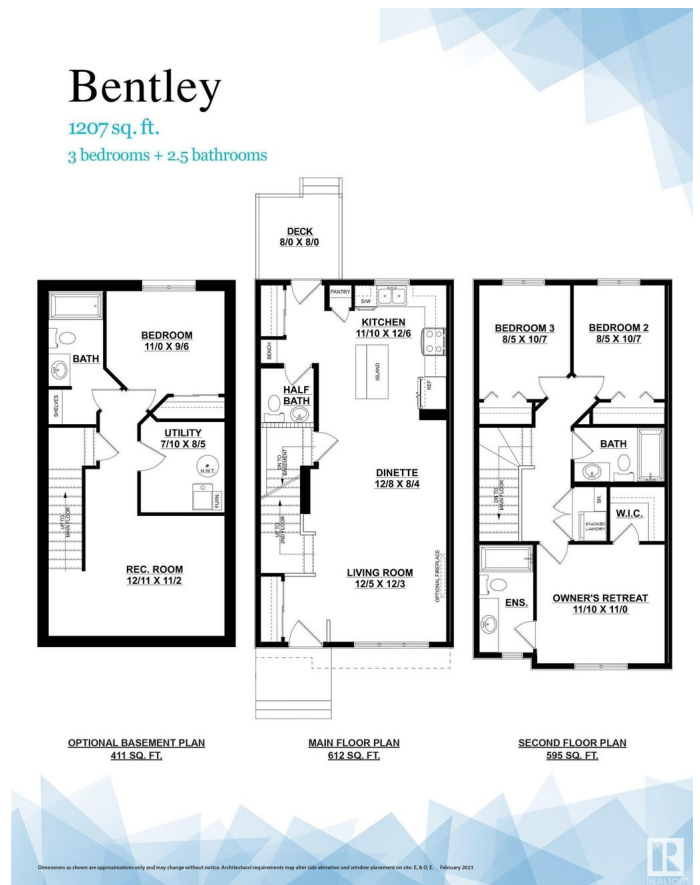
## Interior

|                   |                           |
|-------------------|---------------------------|
| Interior Features | ensuite bathroom          |
| Appliances        | See Remarks               |
| Heating           | Forced Air-1, Natural Gas |
| Stories           | 2                         |
| Has Suite         | Yes                       |
| Has Basement      | Yes                       |
| Basement          | Full, Finished            |

## Exterior

|                   |  |
|-------------------|--|
| Exterior          | Wood, Vinyl  |
| Exterior Features | Airport Nearby, Golf Nearby, Park/Reserve, Playground Nearby, Public Transportation, Schools, Shopping Nearby, See Remarks |
| Roof              | Asphalt Shingles   |
| Construction      | Wood, Vinyl  |
| Foundation        | Concrete Perimeter   |

## Additional Information



|                |                |
|----------------|----------------|
| Date Listed    | June 2nd, 2025 |
| Days on Market | 72             |
| Zoning         | Zone 59        |

DATA IS DEEMED RELIABLE BUT IS NOT GUARANTEED ACCURATE BY THE REALTORS® ASSOCIATION OF EDMONTON. COPYRIGHT 2025 BY THE REALTORS® ASSOCIATION OF EDMONTON. ALL RIGHTS RESERVED. Trademarks are owned or controlled by the Canadian Real Estate Association (CREA) and identify real estate professionals who are members of CREA (REALTOR®, REALTORS®) and/or the quality of services they provide (MLS®, Multiple Listing Service®)

Listing information last updated on August 13th, 2025 at 6:17pm MDT