

\$524,900 - 303 14105 West Block Drive, Edmonton

MLS® #E4439367

\$524,900

2 Bedroom, 2.00 Bathroom, 953 sqft

Condo / Townhouse on 0.00 Acres

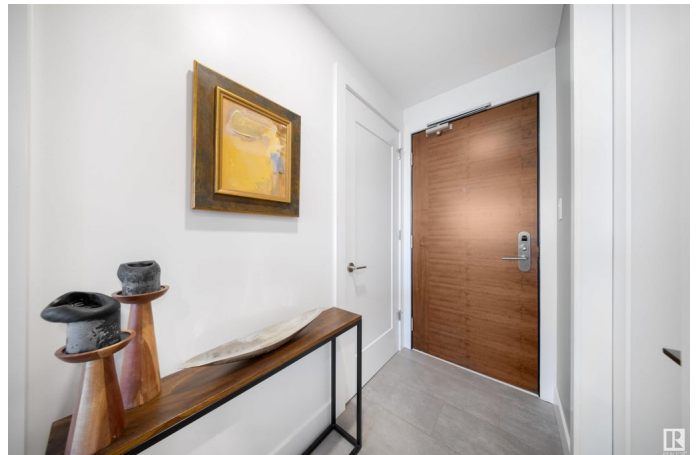
Glenora, Edmonton, AB

For those who seek the exceptional. Introducing West Block Glenora! This premium offering occupies the north side of the building, boasting nearly 1,000 sqft of some of the finest materials and design in Edmonton. Step inside and be captivated by floor-to-ceiling windows, rich hardwood flooring, and sleek ceramic tile - no carpet to be found. The primary suite includes a large stand-up shower, deep soaker tub, and double closets. An additional bedroom provides easy access to the other full bathroom. Indulge in luxury with a linear fireplace in the main living space, premium Bosch appliances in the chef's kitchen, and a massive outdoor patio. Amenities here are unmatched: indoor and outdoor lounges, a large fenced outdoor dog run, full fitness centre, meeting rooms, and a hotel suite for owners and their guests. Includes one titled underground parking stall. Come experience what itâ€™s like to live at Edmontonâ€™s most prominent address.

Built in 2019

Essential Information

MLS® #	E4439367
Price	\$524,900
Bedrooms	2
Bathrooms	2.00



Full Baths	2
Square Footage	953
Acres	0.00
Year Built	2019
Type	Condo / Townhouse
Sub-Type	Apartment High Rise
Style	Single Level Apartment
Status	Active

Community Information

Address	303 14105 West Block Drive
Area	Edmonton
Subdivision	Glenora
City	Edmonton
County	ALBERTA
Province	AB
Postal Code	T5N 1L5

Amenities

Amenities	Air Conditioner, Car Wash, Ceiling 9 ft., Closet Organizers, Deck, Dog Run-Fenced In, Exercise Room, Guest Suite, Parking-Visitor, Social Rooms, Storage-Locker Room, Concierge Service
Parking Spaces	1
Parking	Heated, Parkade, Underground

Interior

Appliances	Dishwasher-Built-In, Dryer, Garage Opener, Hood Fan, Oven-Built-In, Oven-Microwave, Refrigerator, Stove-Countertop Gas, Washer
Heating	Heat Pump, Natural Gas
Fireplace	Yes
Fireplaces	Glass Door
# of Stories	16
Stories	1
Has Basement	Yes
Basement	None, No Basement

Exterior

Exterior	Concrete
Exterior Features	Corner Lot, Playground Nearby, Public Transportation, River Valley

	View , Shopping Nearby , View City , View Downtown
Roof	EPDM Membrane
Construction	Concrete
Foundation	Concrete Perimeter

Additional Information

Date Listed	May 29th, 2025
Days on Market	65
Zoning	Zone 11
Condo Fee	\$837

DATA IS DEEMED RELIABLE BUT IS NOT GUARANTEED ACCURATE BY THE REALTORS® ASSOCIATION OF EDMONTON. COPYRIGHT 2025 BY THE REALTORS® ASSOCIATION OF EDMONTON. ALL RIGHTS RESERVED. Trademarks are owned or controlled by the Canadian Real Estate Association (CREA) and identify real estate professionals who are members of CREA (REALTOR®, REALTORS®) and/or the quality of services they provide (MLS®, Multiple Listing Service®)

Listing information last updated on August 2nd, 2025 at 5:47am MDT