

## \$599,900 - 1206 Secord Landing, Edmonton

MLS® #E4438982

**\$599,900**

3 Bedroom, 2.50 Bathroom, 2,110 sqft

Single Family on 0.00 Acres

Secord, Edmonton, AB

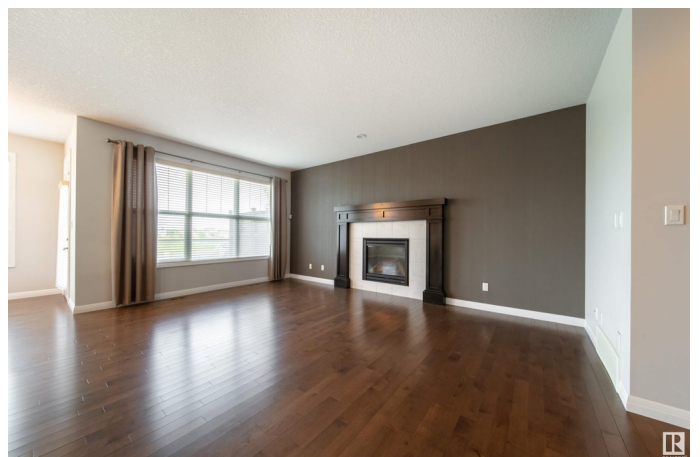
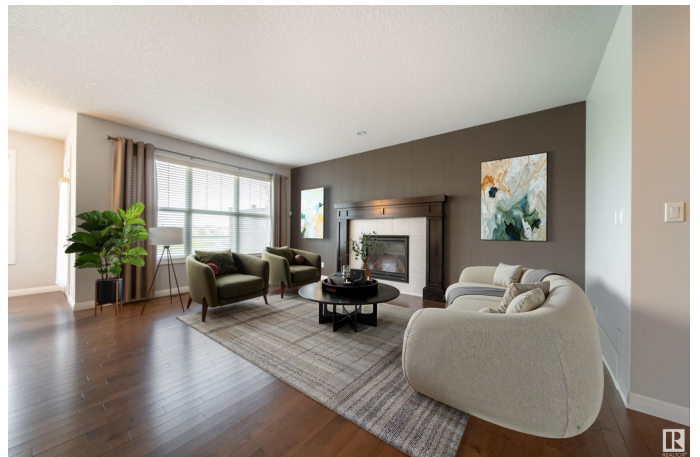
RARE POND-BACKING GEM with a TRIPLE TANDEM GARAGE! This stunning 3 bed, 2.5 bath home offers nearly 2,100 sq.ft of luxury living, fully fenced & landscaped yard backing onto a tranquil pond . The main floor features soaring 9-ft ceilings, rich hardwood floors & spacious living room with a cozy gas fireplace. The executive kitchen is a chef's dream—built-in stainless steel appliances, gas cooktop, quartz countertops, large island, walk-in pantry and elegant maple cabinetry. Upstairs boasts a bright bonus room, two large bedrooms, full bath, convenient laundry, & a spacious primary suite with a 5-piece spa-like ensuite & large walk-in closet. Enjoy year-round comfort with Central A/C and water purification system. The heated triple tandem garage includes hot/cold water, floor drain, & room for all your toys. In the family friendly community of Secord steps from schools, parks, new Rec Centre, shopping, transit & quick access to Anthony Henday & Hwy 16A. Luxury, location, and lifestyle—this home has it all!

Built in 2012

### Essential Information

MLS® # E4438982

Price \$599,900



Bedrooms	3
Bathrooms	2.50
Full Baths	2
Half Baths	1
Square Footage	2,110
Acres	0.00
Year Built	2012
Type	Single Family
Sub-Type	Detached Single Family
Style	2 Storey
Status	Active

### Community Information

Address	1206 Secord Landing
Area	Edmonton
Subdivision	Secord
City	Edmonton
County	ALBERTA
Province	AB
Postal Code	T5T 4N3

### Amenities

Amenities	Air Conditioner, Ceiling 9 ft., Deck, Vinyl Windows, HRV System, Natural Gas BBQ Hookup
Parking Spaces	5
Parking	Double Garage Attached, Over Sized, Tandem, Triple Garage Attached

### Interior

Interior Features	ensuite bathroom
Appliances	Air Conditioning-Central, Dishwasher-Built-In, Dryer, Garage Control, Garage Opener, Oven-Built-In, Refrigerator, Stove-Countertop Gas, Washer, Water Distiller, Water Softener, Window Coverings, Garage Heater
Heating	Forced Air-1, Natural Gas
Fireplace	Yes
Fireplaces	Mantel
Stories	2
Has Basement	Yes
Basement	Full, Unfinished

**Exterior**

Exterior	Wood, Stone, Vinyl
Exterior Features	Fenced, Golf Nearby, Landscaped, Low Maintenance Landscape, Playground Nearby, Public Transportation, Schools, Shopping Nearby
Roof	Asphalt Shingles
Construction	Wood, Stone, Vinyl
Foundation	Concrete Perimeter

**School Information**

Elementary	David Thomas King School
Middle	David Thomas King School
High	Jasper Place School

**Additional Information**

Date Listed	May 28th, 2025
Days on Market	10
Zoning	Zone 58

DATA IS DEEMED RELIABLE BUT IS NOT GUARANTEED ACCURATE BY THE REALTORS® ASSOCIATION OF EDMONTON. COPYRIGHT 2025 BY THE REALTORS® ASSOCIATION OF EDMONTON. ALL RIGHTS RESERVED.Trademarks are owned or controlled by the Canadian Real Estate Association (CREA) and identify real estate professionals who are members of CREA (REALTOR®, REALTORS®) and/or the quality of services they provide (MLS®, Multiple Listing Service®)

Listing information last updated on June 7th, 2025 at 8:32am MDT