

\$660,000 - 114 Hemingway Crescent, Spruce Grove

MLS® #E4437578

\$660,000

3 Bedroom, 2.50 Bathroom, 2,292 sqft
Single Family on 0.00 Acres

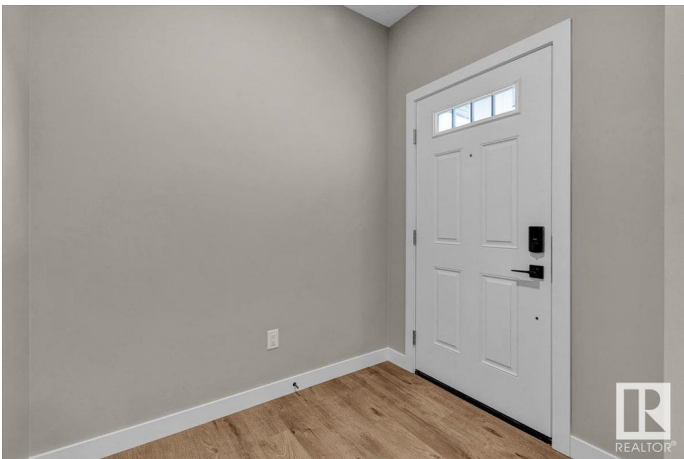
Harvest Ridge, Spruce Grove, AB

Rare Opportunity! This stunning 2-storey new build sits on the last remaining walkout lot, backing onto peaceful greenspace and mature trees—a truly exceptional setting that offers privacy and stunning views. The bright, open-concept layout features soaring ceilings and large windows that flood the home with natural light. The chef’s kitchen boasts high-end appliances, ample cabinetry, and a spacious island—perfect for hosting. The living room offers a cozy electric fireplace, while the main-floor den provides a quiet workspace. Upstairs, the luxurious primary suite includes a 5-piece ensuite with dual sinks, a soaker tub, and a walk-through to the laundry room from the walk-in closet. Two more bedrooms, a bonus room, and a 4-piece bath complete the upper level. With a side entrance for future flexibility and a location near schools, parks, and amenities, this home is a rare find that combines style, comfort, and a one-of-a-kind natural setting.

Built in 2025

Essential Information

MLS® #	E4437578
Price	\$660,000
Bedrooms	3
Bathrooms	2.50



Full Baths	2
Half Baths	1
Square Footage	2,292
Acres	0.00
Year Built	2025
Type	Single Family
Sub-Type	Detached Single Family
Style	2 Storey
Status	Active

Community Information

Address	114 Hemingway Crescent
Area	Spruce Grove
Subdivision	Harvest Ridge
City	Spruce Grove
County	ALBERTA
Province	AB
Postal Code	T7X 3W3

Amenities

Amenities	Ceiling 9 ft., No Animal Home, No Smoking Home, Walkout Basement
Parking	Double Garage Attached

Interior

Interior Features	ensuite bathroom
Appliances	Dishwasher-Built-In, Microwave Hood Fan, Refrigerator, Stove-Electric
Heating	Forced Air-1, Natural Gas
Fireplace	Yes
Fireplaces	Insert
Stories	2
Has Basement	Yes
Basement	Full, Unfinished

Exterior

Exterior	Wood, Stone, Vinyl
Exterior Features	Park/Reserve, Playground Nearby, Schools, Shopping Nearby
Roof	Asphalt Shingles
Construction	Wood, Stone, Vinyl
Foundation	Concrete Perimeter

Additional Information

Date Listed May 21st, 2025
Days on Market 37
Zoning Zone 91

DATA IS DEEMED RELIABLE BUT IS NOT GUARANTEED ACCURATE BY THE REALTORS® ASSOCIATION OF EDMONTON. COPYRIGHT 2025 BY THE REALTORS® ASSOCIATION OF EDMONTON. ALL RIGHTS RESERVED.Trademarks are owned or controlled by the Canadian Real Estate Association (CREA) and identify real estate professionals who are members of CREA (REALTOR®, REALTORS®) and/or the quality of services they provide (MLS®, Multiple Listing Service®)
Listing information last updated on June 27th, 2025 at 7:32am MDT