

\$129,999 - 101 12110 119 Avenue, Edmonton

MLS® #E4436352

\$129,999

2 Bedroom, 2.00 Bathroom, 776 sqft

Condo / Townhouse on 0.00 Acres

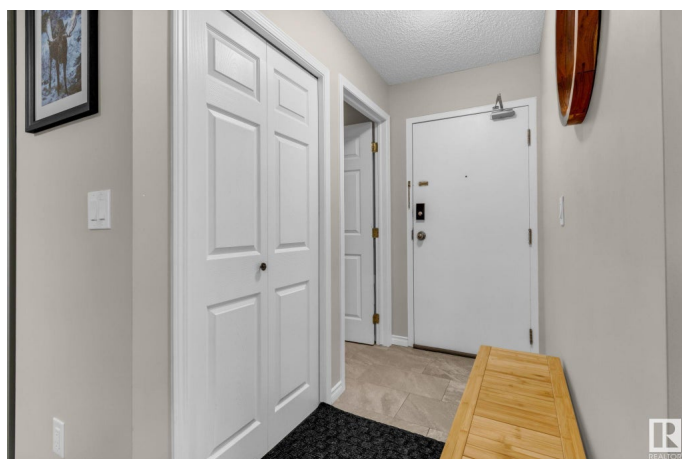
Prince Charles, Edmonton, AB

Welcome to this bright and well-kept 2-bedroom, 2-bathroom condo in the vibrant community of Prince Charles. This main-floor corner unit offers modern comfort with defined living spaces, stylish vinyl plank flooring, and large windows for plenty of natural light. The spacious primary bedroom features a private 4-piece ensuite, while the second bedroom is perfect for guests or a home office. Enjoy the convenience of in-suite laundry, a private patio that opens to a semi-private green space, and covered parking just steps from the entrance. Building amenities include an exercise room, elevator, and secure key fob access. With low condo fees and a central location close to downtown, NAIT, and shopping, this condo offers incredible value for first-time buyers, downsizers, or investors. Don't miss this opportunity to own in one of Edmonton's most connected neighbourhoods!

Built in 2002

Essential Information

MLS® #	E4436352
Price	\$129,999
Bedrooms	2
Bathrooms	2.00
Full Baths	2
Square Footage	776



Acres	0.00
Year Built	2002
Type	Condo / Townhouse
Sub-Type	Lowrise Apartment
Style	Single Level Apartment
Status	Active

Community Information

Address	101 12110 119 Avenue
Area	Edmonton
Subdivision	Prince Charles
City	Edmonton
County	ALBERTA
Province	AB
Postal Code	T5L 5G9

Amenities

Amenities	Detectors Smoke, Exercise Room, Exterior Walls- 2"x6", Intercom, No Smoking Home, Parking-Plug-Ins, Parking-Visitor, Storage-In-Suite, Vinyl Windows
Parking	Single Carport

Interior

Interior Features	ensuite bathroom
Appliances	Hood Fan, Refrigerator, Stacked Washer/Dryer, Stove-Electric
Heating	Baseboard, Hot Water, Natural Gas
# of Stories	3
Stories	3
Has Basement	Yes
Basement	None, No Basement

Exterior

Exterior	Wood, Vinyl
Exterior Features	Landscaped, Picnic Area, Playground Nearby, Public Swimming Pool, Public Transportation, Schools, Shopping Nearby
Roof	Asphalt Shingles
Construction	Wood, Vinyl
Foundation	Concrete Perimeter

Additional Information

Date Listed	May 14th, 2025
Days on Market	1
Zoning	Zone 04
Condo Fee	\$421

DATA IS DEEMED RELIABLE BUT IS NOT GUARANTEED ACCURATE BY THE REALTORS® ASSOCIATION OF EDMONTON. COPYRIGHT 2025 BY THE REALTORS® ASSOCIATION OF EDMONTON. ALL RIGHTS RESERVED. Trademarks are owned or controlled by the Canadian Real Estate Association (CREA) and identify real estate professionals who are members of CREA (REALTOR®, REALTORS®) and/or the quality of services they provide (MLS®, Multiple Listing Service®)

Listing information last updated on May 15th, 2025 at 4:17pm MDT