

## \$535,000 - 6443 164 Avenue, Edmonton

MLS® #E4434024

**\$535,000**

4 Bedroom, 3.50 Bathroom, 1,927 sqft

Single Family on 0.00 Acres

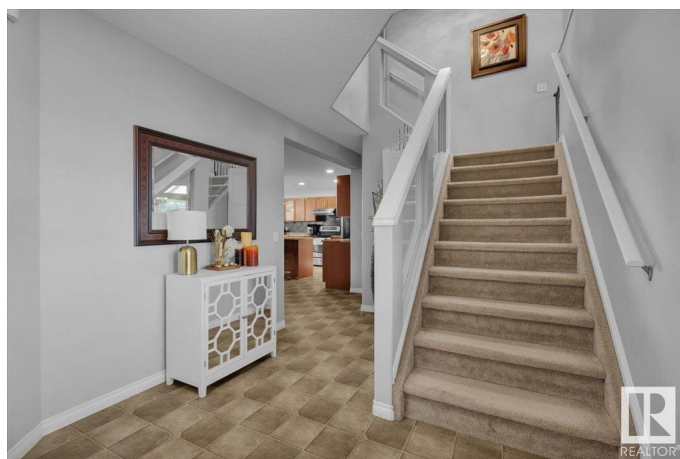
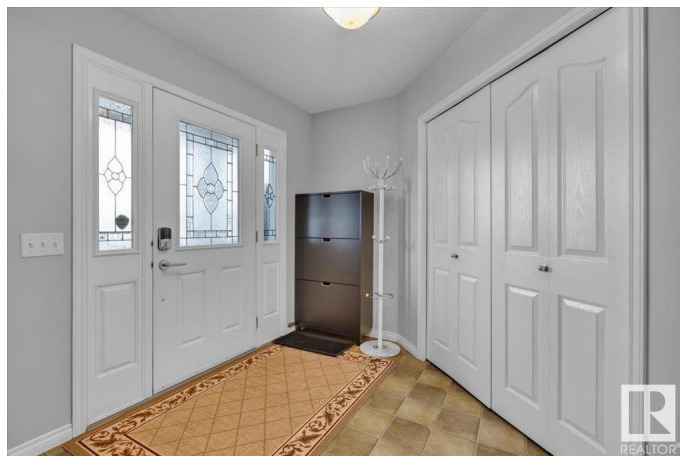
Matt Berry, Edmonton, AB

Located on a large pie shaped lot in a cul-de-sac. Terrific family home with family sized kitchen open to a great room with gas fireplace. 3 bedrooms plus bonus room upstairs. Spacious primary bedroom with walk in closet and a large ensuite with jetted tub and shower. Recently renovated basement features a large 4th bedroom, full bath and family room. Additional features include main floor laundry, hardwood floors, stainless steel appliances, large deck and more! For more details please visit the REALTOR®'s Website.

Built in 2006

### Essential Information

MLS® #	E4434024
Price	\$535,000
Bedrooms	4
Bathrooms	3.50
Full Baths	3
Half Baths	1
Square Footage	1,927
Acres	0.00
Year Built	2006
Type	Single Family
Sub-Type	Detached Single Family
Style	2 Storey



Status Active

## Community Information

Address 6443 164 Avenue  
Area Edmonton  
Subdivision Matt Berry  
City Edmonton  
County ALBERTA  
Province AB  
Postal Code T5Y 3J2

## Amenities

Amenities Deck, Sauna; Swirlpool; Steam, Vaulted Ceiling, Vinyl Windows  
Parking Spaces 4  
Parking Double Garage Attached

## Interior

Interior Features ensuite bathroom  
Appliances Dishwasher-Built-In, Dryer, Garage Control, Garage Opener, Refrigerator, Stove-Electric, Washer, Window Coverings  
Heating Forced Air-1, Natural Gas  
Fireplace Yes  
Fireplaces Mantel  
Stories 3  
Has Basement Yes  
Basement Full, Finished

## Exterior

Exterior Wood, Brick, Vinyl  
Exterior Features Cul-De-Sac, Playground Nearby, Public Transportation, Schools, Shopping Nearby  
Roof Asphalt Shingles  
Construction Wood, Brick, Vinyl  
Foundation Concrete Perimeter

## School Information

Elementary Dr. Donald M/St. John B  
Middle Dr. Donald M/J.J. Bowlen  
High M.E. Lazerte/Archbishop O'

**Additional Information**

Date Listed            May 2nd, 2025  
Days on Market       9  
Zoning                 Zone 03

DATA IS DEEMED RELIABLE BUT IS NOT GUARANTEED ACCURATE BY THE REALTORS® ASSOCIATION OF EDMONTON. COPYRIGHT 2025 BY THE REALTORS® ASSOCIATION OF EDMONTON. ALL RIGHTS RESERVED.Trademarks are owned or controlled by the Canadian Real Estate Association (CREA) and identify real estate professionals who are members of CREA (REALTOR®, REALTORS®) and/or the quality of services they provide (MLS®, Multiple Listing Service®)  
Listing information last updated on May 11th, 2025 at 12:02pm MDT