

# \$649,900 - 1990 Ainslie Link, Edmonton

MLS® #E4433837

**\$649,900**

4 Bedroom, 3.50 Bathroom, 2,185 sqft  
Single Family on 0.00 Acres

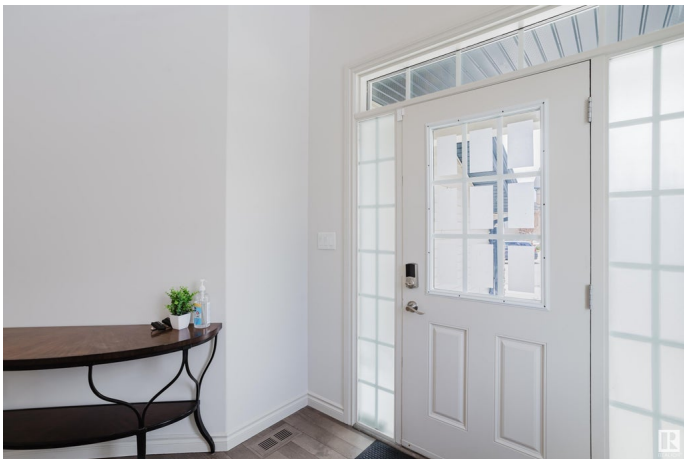
Ambleside, Edmonton, AB

Prepare to be impressed by this beautifully crafted Kimberley-built home from a four-time Builder of the Year, tucked away on a quiet street surrounded by executive homes. Offering 3,047 sq ft of refined living space this residence blends timeless design with modern function. The main level features engineered hardwood, a chef’s kitchen with granite breakfast bar, pendant lighting, and upgraded stainless steel appliances. A marble-accented fireplace anchors the great room, while the upper level offers a bonus room, spa-inspired primary suite with jetted tub, and two additional bedrooms. The basement includes a rec room, bedroom, full bath, and tech space. Outside, enjoy a heated garage with epoxy floors, landscaped yard with accent lighting, large deck, patio, and shed. Ideally located steps from Currents of Windermere with shopping, dining, parks, and schools nearby—this home delivers exceptional quality in a truly desirable setting.

Built in 2013

## Essential Information

MLS® #	E4433837
Price	\$649,900
Bedrooms	4
Bathrooms	3.50



Full Baths	3
Half Baths	1
Square Footage	2,185
Acres	0.00
Year Built	2013
Type	Single Family
Sub-Type	Detached Single Family
Style	2 Storey
Status	Active

### **Community Information**

Address	1990 Ainslie Link
Area	Edmonton
Subdivision	Ambleside
City	Edmonton
County	ALBERTA
Province	AB
Postal Code	T6W 2M1

### **Amenities**

Amenities	Air Conditioner, Deck
Parking Spaces	4
Parking	Double Garage Attached

### **Interior**

Interior Features	ensuite bathroom
Appliances	Dishwasher-Built-In, Dryer, Hood Fan, Refrigerator, Stove-Gas, Washer, See Remarks
Heating	Forced Air-1, Natural Gas
Fireplace	Yes
Fireplaces	Marble Surround
Stories	3
Has Basement	Yes
Basement	Full, Finished

### **Exterior**

Exterior	Wood, Stone, Vinyl
Exterior Features	Fenced, Golf Nearby, Landscaped, Park/Reserve, Playground Nearby, Public Transportation, Schools, Shopping Nearby, See Remarks

Roof	Asphalt Shingles
Construction	Wood, Stone, Vinyl
Foundation	Concrete Perimeter

**Additional Information**

Date Listed	May 1st, 2025
Days on Market	6
Zoning	Zone 56
HOA Fees Freq.	Other

DATA IS DEEMED RELIABLE BUT IS NOT GUARANTEED ACCURATE BY THE REALTORS® ASSOCIATION OF EDMONTON. COPYRIGHT 2025 BY THE REALTORS® ASSOCIATION OF EDMONTON. ALL RIGHTS RESERVED.Trademarks are owned or controlled by the Canadian Real Estate Association (CREA) and identify real estate professionals who are members of CREA (REALTOR®, REALTORS®) and/or the quality of services they provide (MLS®, Multiple Listing Service®)

Listing information last updated on May 6th, 2025 at 8:47pm MDT