

\$94,999 - 10640 111 Street, Edmonton

MLS® #E4428651

\$94,999

2 Bedroom, 1.00 Bathroom, 776 sqft

Condo / Townhouse on 0.00 Acres

Queen Mary Park, Edmonton, AB

INVESTMENT OPPORTUNITY! Located in the **CENTRAL & CONVENIENT** community of Queen Mary Park near downtown Edmonton. Walking distance to MacEwan University and Edmonton's light rail transit system (MacEwan Station), Kingsway Mall, Unity Square, and close to the Ice District, the Brewery District & Chinatown. This apartment features 2 good-sized bedrooms, a spacious living area, full 4-piece bathroom and an updated kitchen w/ dining space. The kitchen cabinets and countertops, paint, and flooring were renovated a few years ago. Included is a large closet in the main hallway and large windows in the home. Laundry room available in building! A designated parking stall is located next to the back door entrance for ease of use. Queen Mary Park is a mature neighborhood with beautiful tree-lined streets, a vibrant community and has quick and easy access to public transportation, schools and more. Convenient ETS bus routes: #901, #902, and on 107 Ave & 110 Street.

Built in 1969

Essential Information

MLS® # E4428651

Price \$94,999

Bedrooms 2



Bathrooms	1.00
Full Baths	1
Square Footage	776
Acres	0.00
Year Built	1969
Type	Condo / Townhouse
Sub-Type	Lowrise Apartment
Style	Single Level Apartment
Status	Active

Community Information

Address	10640 111 Street
Area	Edmonton
Subdivision	Queen Mary Park
City	Edmonton
County	ALBERTA
Province	AB
Postal Code	T5H 3E9

Amenities

Amenities	Intercom, No Animal Home, No Smoking Home, Parking-Plug-Ins
Parking	Stall

Interior

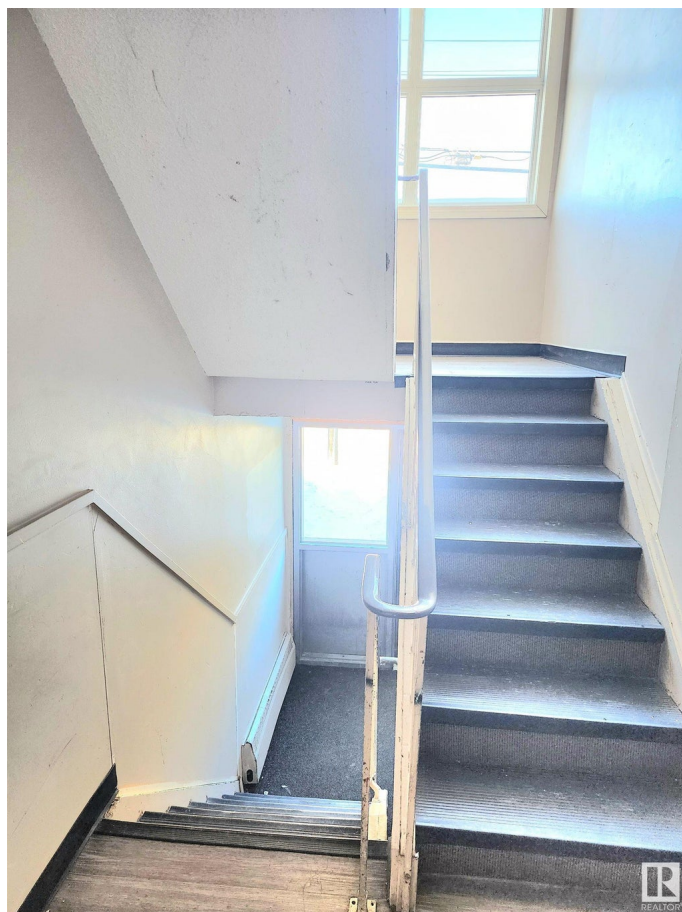
Appliances	Hood Fan, Refrigerator, Stove-Electric
Heating	Baseboard, Natural Gas
# of Stories	3
Stories	3
Has Basement	Yes
Basement	See Remarks

Exterior

Exterior	Wood, Brick, Vinyl
Exterior Features	Public Transportation
Roof	Unknown
Construction	Wood, Brick, Vinyl
Foundation	Concrete Perimeter

Additional Information

Date Listed	April 2nd, 2025
Days on Market	74
Zoning	Zone 08
Condo Fee	\$470



DATA IS DEEMED RELIABLE BUT IS NOT GUARANTEED ACCURATE BY THE REALTORS® ASSOCIATION OF EDMONTON. COPYRIGHT 2025 BY THE REALTORS® ASSOCIATION OF EDMONTON. ALL RIGHTS RESERVED. Trademarks are owned or controlled by the Canadian Real Estate Association (CREA) and identify real estate professionals who are members of CREA (REALTOR®, REALTORS®) and/or the quality of services they provide (MLS®, Multiple Listing Service®)

Listing information last updated on June 15th, 2025 at 8:47pm MDT