

Courtesy Of Jeff Jackson Of Bode

\$629,900 - 8832 183 Avenue Nw, Edmonton

MLS® #E4351293

\$629,900

3 Bedroom, 3.00 Bathroom, 2,186 sqft

Single Family on 0.00 Acres

Klarvatten, Edmonton, AB

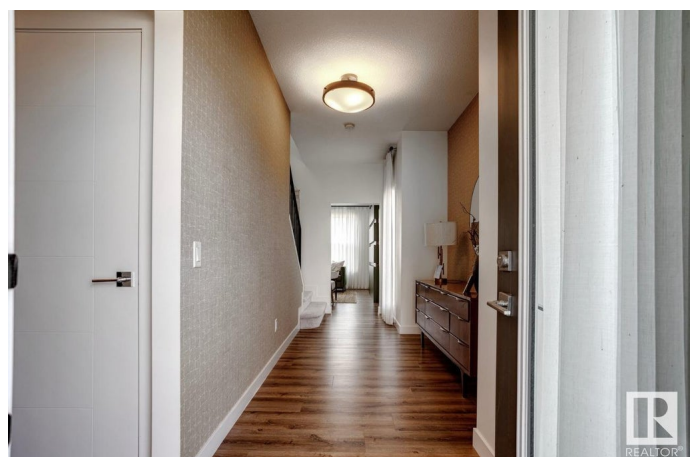
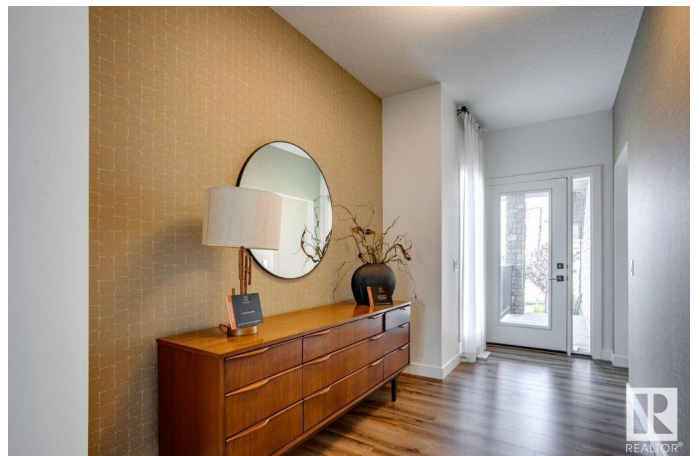
Welcome to The Greta II by Park Royal Homes. As you step inside, you'll be greeted by a spacious foyer and to your left, you'll find the mudroom, a convenient half bath, and garage access, ensuring practicality and organization in your daily life. The home flows seamlessly into the large open concept living-dining and kitchen space. The great room boasts a signature modern wall detail, anchoring the area with style and sophistication. The adjacent dining nook provides ample space for hosting large family gatherings and creating memories together. The kitchen is a culinary haven with satin black and wood mixed cabinetry, a large island with breakfast bar, ceiling-height cabinets, a walk-through pantry, and upgraded appliances thoughtfully included. Moving upstairs, the primary suite offers a private oasis. With a separate walk-in closet and a luxurious 5-piece upgraded spa bath, it promises a perfect retreat to unwind, a bonus room and laundry complete the upper level. Photos are representative.

Built in 2020

Essential Information

MLS® # E4351293

Price \$629,900



Bedrooms	3
Bathrooms	3.00
Full Baths	2
Half Baths	1
Square Footage	2,186
Acres	0.00
Year Built	2020
Type	Single Family
Sub-Type	Residential Detached Single Family
Style	2 Storey

Community Information

Address	8832 183 Avenue Nw
Area	Edmonton
Subdivision	Klarvatten
City	Edmonton
County	ALBERTA
Province	AB
Postal Code	T5X 6G5

Amenities

Amenities	No Animal Home, No Smoking Home
Features	No Animal Home, No Smoking Home
Parking Spaces	4
Parking	Double Garage Attached
# of Garages	2
Garages	5.79X7.31

Interior

Interior	Carpet, Ceramic Tile, Vinyl Plank
Interior Features	Microwave Hood Cover, Refrigerator, Stove-Electric, Washer, Dishwasher-Built-In, Dryer
Heating	Forced Air-1
# of Stories	2
Has Basement	Yes
Basement	Unfinished, Full

Exterior

Exterior	Vinyl
----------	-------

Exterior Features	Level Land, Park/Reserve, Playground Nearby, Schools, Shopping Nearby
Construction	Wood Frame

Additional Information

Date Listed	July 24th, 2023
-------------	-----------------

DATA IS DEEMED RELIABLE BUT IS NOT GUARANTEED ACCURATE BY THE REALTORS® ASSOCIATION OF EDMONTON. COPYRIGHT 2024 BY THE REALTORS® ASSOCIATION OF EDMONTON. ALL RIGHTS RESERVED.Trademarks are owned or controlled by the Canadian Real Estate Association (CREA) and identify real estate professionals who are members of CREA (REALTOR®, REALTORS®) and/or the quality of services they provide (MLS®, Multiple Listing Service®)

Listing information last updated on May 21st, 2024 at 7:16am MDT