

# \$3,500,000 - 17303 23 Avenue Nw, Edmonton

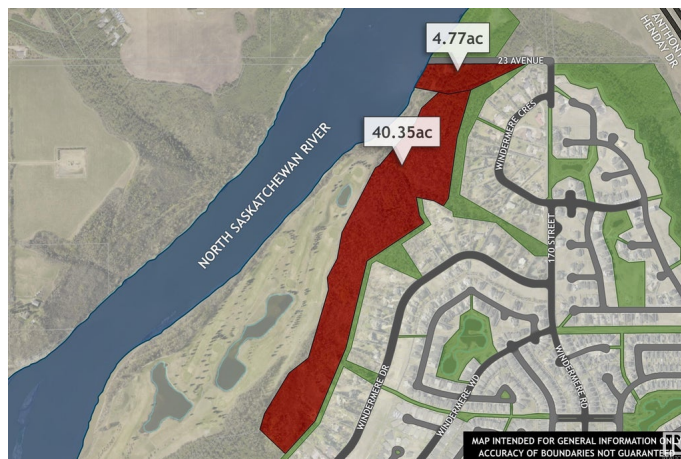
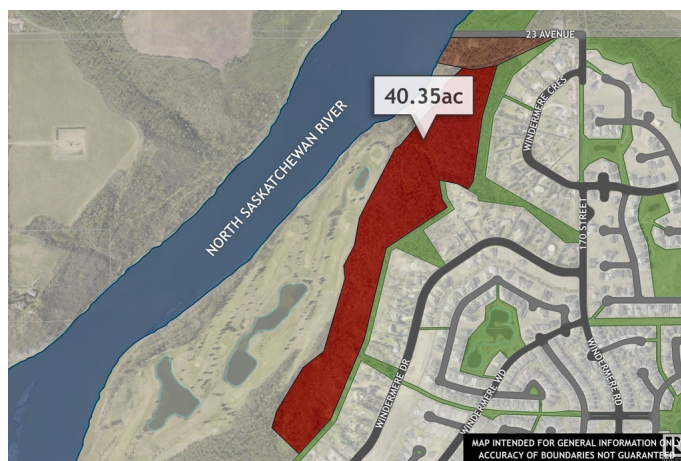
MLS® #E4335408

**\$3,500,000**

0 Bedroom, 0.00 Bathroom,  
Single Family on 40.33 Acres

Windermere, Edmonton, AB

Once-in-a-lifetime opportunity to own land in the river valley! 40.35 acres of privately-owned land with stunning views of the North Saskatchewan, River Ridge golf course and the natural beauty of Edmonton's river valley. Located in beautiful Windermere, this is a truly unique building opportunity on a private, gently-sloping parcel, down within the valley itself. Visit REALTOR® website for additional information.



## Essential Information

MLS® #	E4335408
Price	\$3,500,000
Bathrooms	0.00
Acres	40.33
Type	Single Family
Sub-Type	Vacant Lot/Land

## Community Information

Address	17303 23 Avenue Nw
Area	Edmonton
Subdivision	Windermere
City	Edmonton
County	ALBERTA
Province	AB
Postal Code	T6R 0T0

**Exterior**

Exterior Features    Backs Onto Park/Trees, No Through Road, Private Setting, River Valley View, River View, See Remarks

**Additional Information**

Date Listed            April 13th, 2023

DATA IS DEEMED RELIABLE BUT IS NOT GUARANTEED ACCURATE BY THE REALTORS® ASSOCIATION OF EDMONTON. COPYRIGHT 2024 BY THE REALTORS® ASSOCIATION OF EDMONTON. ALL RIGHTS RESERVED.Trademarks are owned or controlled by the Canadian Real Estate Association (CREA) and identify real estate professionals who are members of CREA (REALTOR®, REALTORS®) and/or the quality of services they provide (MLS®, Multiple Listing Service®)

Listing information last updated on May 4th, 2024 at 10:16am MDT