

Courtesy Of Arvinder Clair Of MaxWell Polaris

\$394,900 - 9338 Pear Link Sw, Edmonton

MLS® #E4203852

\$394,900

4 Bedroom, 3.00 Bathroom, 1,617 sqft
Single Family on 0 Acres

Orchards At Ellerslie The, Edmonton, AB

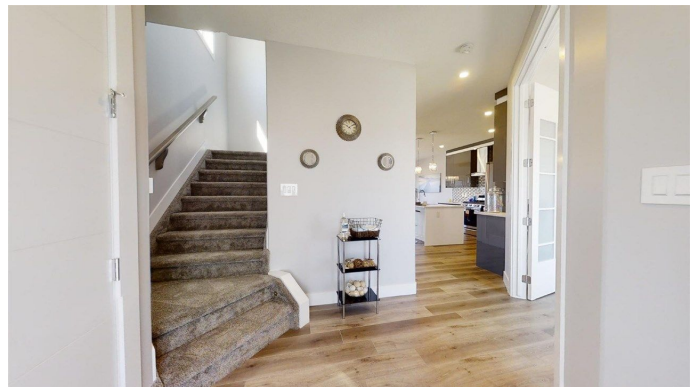
First Time Home Buyers + Investors Alert*

This BRAND NEW 1704 sq ft Half Duplex
Have 3 + 1 Bedrooms, 2.5 Bathrooms,
SEPARATE ENTRY to basement Eligible for 2
Bedroom legal basement Suite & Double
Detach Garage. Main floor comes with
Bedroom, half bath, upgraded Kitchen with
ceiling height premium cabinets, quartz
counter top, stainless steel appliances, back
splash, LED lighting, durable Vinyl Plank
flooring, Living room with tile surround
fireplace, dining area and door to back deck
with BBQ gas line. Upper floor has 3
bedrooms, 2 bathrooms, Bonus room, laundry
area with counter top and cabinets & bonus
room. Location is perfect with Abundance of
walking trails, skating rinks, tennis, spray park,
Close to Shopping, new amazon warehouse &
hwy 2. **WON'T LAST!!!**

Built in 2020

Essential Information

MLS® #	E4203852
Price	\$394,900
Bedrooms	4
Bathrooms	3.00
Full Baths	2
Half Baths	1
Square Footage	1,617



Acres	0.00
Year Built	2020
Type	Single Family
Sub-Type	Half Duplex
Style	2 Storey
Status	ACTIVE

Community Information

Address	9338 Pear Link Sw
Area	Edmonton
Subdivision	Orchards At Ellerslie The
City	Edmonton
County	ALBERTA
Province	AB
Postal Code	T6X 2V9

Amenities

Features	Deck, See Remarks
Parking	Double Garage Detached
# of Garages	2

Interior

Interior	Carpet, Ceramic Tile, Vinyl Plank
Interior Features	Dishwasher-Built-In, Garage Control, Garage Opener, Hood Fan, Oven-Microwave, Refrigerator, Stove-Electric
Heating	Forced Air-1
Has Basement	Yes
Basement	Full, Unfinished
# of Stories	2

Exterior

Exterior	Stone, Vinyl
Exterior Features	Back Lane, Park/Reserve, Playground Nearby, Schools, Shopping Nearby, See Remarks
Roof	Asphalt Shingles
Construction	Wood Frame
Foundation	Concrete

Listing information last updated on August 8th, 2020 at 8:16am MDT